

2018 Air Quality Annual Status Report (ASR)

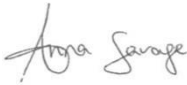
In fulfilment of Part IV of the
Environment Act 1995
Local Air Quality Management

October 2018

Wealden District Council

Local Authority Officer	Linda Deacon
Department	Pollution Control
Address	Wealden District Council Vicarage Lane Hailsham BN27 2AX
Telephone	01323443281
E-mail	linda.deacon@wealden.gov.uk
Report Reference number	WDC 2018 ASR
Date	October 2018

Prepared by: 
 Julian Mann
 Air Quality Scientist

Checked by: 
 Anna Savage
 Principal Air Quality consultant

Approved by: 
 Gareth Collins
 Regional Director

Rev No	Comments	Checked by	Approved by	Date
1	Draft	AS	GC	06/03/2019

Sunley House, 4 Bedford Park, Croydon, Surrey. CR0 2AP
 Telephone: 0870 905 0906 Website: <http://www.aecom.com>

Job No: 60508341

Reference: WDC 2018 ASR

Date Created: October 2018

Executive Summary: Air Quality in Our Area

Air Quality in Wealden

Air pollution is associated with a number of adverse health impacts. It is recognised as a contributing factor in the onset of heart disease and cancer. Additionally, air pollution particularly affects the most vulnerable in society: children and older people, and those with heart and lung conditions. There is also often a strong correlation with equalities issues, because areas with poor air quality are also often the less affluent areas^{1,2}.

The annual health cost to society of the impacts of particulate matter alone in the UK is estimated to be around £16 billion³.

The District of Wealden is the largest district in East Sussex, and one of the most rural districts in England. Road traffic is the dominant source of air pollution in the area, the major routes being the A22, the A26, the A267, the A259, the A27 and the A272. The main pollutants of concern with respect to road traffic are nitrogen dioxide (NO₂) and particulate matter (PM₁₀ and PM_{2.5}). Currently, there are no areas in Wealden where members of the public are exposed to levels of these pollutants in excess of the UK Air Quality Objectives.

Wealden District Council manages local air quality in close collaboration with East Sussex County Council (which contributed to monitoring until 2014) and with the Sussex Air Quality Partnership (Sussex Air). The partnership provides assistance to members and information to the public via its web-site with recent air quality data, news updates, educational resources, links and other services such as airAlert.

In recent years, local monitoring has identified high levels of NO₂ at two roadside locations (A267 East of Cross in Hand, and West of Boship Roundabout), in areas where members of the public are not affected. In March 2017 the A267 East of Cross in hand monitoring location changed due to difficult access and it not being a representative site. The site was moved further down the same road and nearer to residential properties. In 2017, concentrations at the nearest sensitive receptors for

¹ Environmental equity, air quality, socioeconomic status and respiratory health, 2010

² Air quality and social deprivation in the UK: an environmental inequalities analysis, 2006

³ Defra. Abatement cost guidance for valuing changes in air quality, May 2013

both locations achieved the UK air quality objective for annual mean NO₂, with concentrations lower than 40 µg/m³.

Two new locations for monitoring NO₂ were introduced in May 2017 in Forest Row. At the new A22 roadside site (W10), the annualised monitored concentration of NO₂ slightly exceeded the UK air quality objective for annual mean NO₂ (40.6 µg/m³), although when distance-corrected for relevant exposure, this fell to below the objective value.

PM₁₀ and PM_{2.5} are not monitored in Wealden District, but data from neighbouring Eastbourne suggest concentrations are consistently low (well below the UK annual mean objectives), decreasing slightly but with significant year-to-year variations. The number of days with high PM₁₀ concentrations (above the 24-hour objective) has decreased between 2013 and 2017.

As in other suburban and rural areas of East Sussex, ozone (O₃) is of considerable concern. O₃ is monitored in two locations in Wealden: Isfield and Lullington Heath. Annual average O₃ levels at Lullington Heath have increased since 2011 but remain below the objective. Levels at Isfield have been stable and have been above the objective except in 2014. The number of days with high ozone concentrations (above the 8-hour objective) has decreased since 2011, with significant year-to-year variability.

Sulphur dioxide (SO₂) is also measured at the Lullington Heath station. However, in recent years there have been no exceedances of any of the three UK Air Quality Objectives (15-minute, 1-hour and 24-hour).

Two-thirds of the District is designated as the High Weald and Sussex Downs Areas of Outstanding Natural Beauty (AONB) with 34 other conservations areas. The impact of traffic-related air pollution on some of these areas has been assessed in past years. Current or future traffic flows predicted from development plans are not expected to put the Pevensey Levels Special Area of Conservation (SAC) at risk from excessive nitrogen deposition. The impact of traffic on the Ashdown Forest Special Protection Area (SPA) and SAC is currently being monitored, and the results will be examined in future years.

Actions to Improve Air Quality

Wealden District Council is helping the public to avoid the worst effects of O₃ pollution by monitoring O₃ levels at two locations, and informing the public of pollution events through the airAlert pollution warning service. This service is provided and maintained through the Sussex Air partnership.

Energise was established as a public/private sector partnership by local authorities across Sussex, Surrey and Kent and was led by the Sussex Air Partnership, to help support the promotion of electric vehicle uptake in the region, by making access simpler. Charging points are located in the Wealden District at Selmeston Services (A27), Wealden District Council offices in Hailsham, Herstmonceux Integrated Health Centre, Crowborough Station, and Forest Row Parish Council.

Wealden District Council seeks to mitigate the air quality impacts from development in the district, in particular in the areas of ecological importance. The Council screens development proposals for significant air quality impacts on conservation areas such as the Ashdown Forest, and is working to reduce the current traffic levels around the Forest by identifying Suitable Alternative Natural Green Spaces (SANGS), and by implementing, with partner authorities and organisations, a Strategic Access Management and Monitoring Strategy (SAMMS). There is also a guidance note for developers on reducing traffic-related impacts on the Ashdown Forest.

Wealden District Council also contributes to the Air Quality and Emissions Mitigation Guidance for Sussex. The guidance supports the principles of the Sussex Air Quality Partnership to improve air quality across Sussex and encourage emissions reductions to improve the environment and health of the population. Other actions being implemented to improve public health include promoting active modes of transport like walking, cycling and using public transport, as well as car clubs and car sharing.

Conclusions and Priorities

This Annual Status Report confirms that concentrations within Wealden continue to be well within the NO₂ annual mean air quality objective at relevant locations. No significant changes in emissions sources within the Council's area have been identified in the last year.

The priorities for the coming year will be to continue monitoring in the area and continue to implement measures to increase sustainable travel options and improve transport infrastructure. Wealden District Council will continue to protect public health by providing real-time O₃ measurements on the Sussex Air website and alerting the general public in advance of pollution events through the airAlert service.

The main challenge for air quality management in Wealden is balancing the planned population growth in the District with conservation of the natural habitats that constitute most of the District's territory. Two-thirds of the District is designated as the High Weald and Sussex Downs AONB, along with 34 other conservations areas. Wealden District Council will address this challenge by managing a sustainable level of development, and monitoring pollution impacts on conservation areas such as the Ashdown Forest.

Local Engagement and How to get Involved

Everyone concerned about air quality in Wealden and the rest of Sussex can find real-time information on pollution levels on the Sussex Air website sussex-air.net, and sign up for advance warnings with the airAlert service at airalert.info. Warnings are provided by text or voice message, email, or using an Android or iOS app. The service is also available to schools and is a great way to get everyone engaged in thinking about the importance of air quality.

Large and small businesses in the vicinity of the Ashdown Forest and elsewhere can help reduce air pollution by adopting 'smarter choices' for traffic, as detailed in the Council's Guidance Note⁴.

Drivers planning to replace their vehicles are encouraged to consider low and ultra-low emission vehicles, such as electric cars, plug-in hybrids and extended-range electric vehicles. The Energise Network provides members with access to more than 150 electric vehicle charging points across the South East. These include most local authority charge points in Kent, Surrey and Sussex, plus a number of Southern Rail fast chargers. For a map of the charging points and details on how to join, please visit energisenetwork.co.uk.

⁴ Wealden District Council (2013). Guidance note on reducing nitrogen deposition at the Ashdown Forest Special Area of Conservation and Special Protection Area. Available at: <http://www.wealden.gov.uk/nmsruntime/saveasdialog.aspx?IID=12452&sID=3484>

Table of Contents

Executive Summary: Air Quality in Our Area	i
Air Quality in Wealden	i
Actions to Improve Air Quality	iii
Conclusions and Priorities	iii
Local Engagement and How to get Involved	iv
1 Local Air Quality Management	1
2 Actions to Improve Air Quality	2
2.1 Air Quality Management Areas.....	2
2.2 Progress and Impact of Measures to address Air Quality in Wealden.....	4
2.3 PM _{2.5} – Local Authority Approach to Reducing Emissions and/or Concentrations.....	14
3 Air Quality Monitoring Data and Comparison with Air Quality Objectives and National Compliance	15
3.1 Summary of Monitoring Undertaken	15
3.1.1 Automatic Monitoring Sites	15
3.1.2 Non-Automatic Monitoring Sites.....	15
3.2 Individual Pollutants	16
3.2.1 Nitrogen Dioxide (NO ₂).....	16
3.2.2 Particulate Matter (PM ₁₀).....	20
3.2.3 Particulate Matter (PM _{2.5})	21
3.2.4 Sulphur Dioxide (SO ₂)	22
3.2.5 Ozone (O ₃).....	22
Appendix A: Monitoring Results	25
Appendix B: Full Monthly Diffusion Tube Results for 2017	42
Appendix C: Supporting Technical Information / Air Quality Monitoring Data QA/QC	44
Appendix D: Map(s) of Monitoring Locations and AQMAs	50
Appendix E: Summary of Air Quality Objectives in England	51
Glossary of Terms	52
References	53

List of Tables

Table 2.1 – Declared Air Quality Management Areas.....	3
Table 2.2 – Progress on Measures to Improve Air Quality	11

List of Figures

Figure 1: Trends in Annual Mean NO₂ Concentrations measured at Automatic Monitoring Sites 18

Figure 2: Trends in Annual Mean NO₂ Concentrations measured at Diffusion Tube Monitoring Sites 19

Figure 3: Trends in Annual Mean Particulate Matter (PM₁₀) Concentrations measured at Automatic Monitoring Sites20

Figure 4: Trends in Number of Exceedances of the 24-Hour Mean Particulate Matter (PM₁₀) Objective measured at Automatic Monitoring Sites21

Figure 5: Trends in Annual Mean Particulate Matter (PM_{2.5}) Concentrations measured at Automatic Monitoring Sites22

Figure 6: Trends in Annual Mean O₃ Concentrations measured at Automatic Monitoring Sites23

Figure 7: Trends in Number of Days Exceeding the Running 8-Hour Mean Ozone (O₃) Objective24

1 Local Air Quality Management

This report provides an overview of air quality in Wealden during 2017. It fulfils the requirements of Local Air Quality Management (LAQM) as set out in Part IV of the Environment Act (1995) and the relevant Policy and Technical Guidance documents.

The LAQM process places an obligation on all local authorities to regularly review and assess air quality in their areas, and to determine whether or not the air quality objectives are likely to be achieved. Where an exceedance is considered likely the local authority must declare an Air Quality Management Area (AQMA) and prepare an Air Quality Action Plan (AQAP) setting out the measures it intends to put in place in pursuit of the objectives. This Annual Status Report (ASR) is an annual requirement showing the strategies employed by Wealden District Council to improve air quality and any progress that has been made.

The statutory air quality objectives applicable to LAQM in England can be found in Table E.1 in Appendix E.

2 Actions to Improve Air Quality

2.1 Air Quality Management Areas

Air Quality Management Areas (AQMAs) are declared when there is an exceedance or likely exceedance of an air quality objective. After declaration, the authority must prepare an Air Quality Action Plan (AQAP) within 12-18 months setting out measures it intends to put in place in pursuit of compliance with the objectives.

Wealden currently does not have any AQMAs. Therefore, no formal Air Quality Action Plan has been set up and implemented for the District. For reference, a map of Wealden's monitoring locations is available in Appendix D.

Table 2.1 – Declared Air Quality Management Areas

AQMA Name	Date of Declaration	Pollutants and Air Quality Objectives	City / Town	One Line Description	Is air quality in the AQMA influenced by roads controlled by Highways England?	Level of Exceedance (maximum monitored/modelled concentration at a location of relevant exposure)		Action Plan		
						At Declaration	Now	Name	Date of Publication	Link
Wealden District has no declared AQMAs.										

Wealden District Council confirm the information on UK-Air regarding their AQMA(s) is up to date

2.2 Progress and Impact of Measures to address Air Quality in Wealden

Defra's appraisal of last year's ASR concluded that the report as acceptable with the following comments:

1. *"It can be seen that NO₂ concentrations, alongside all other monitored pollutants, remained well below objective levels. Areas subject to significant future growth in population, traffic, and developments, should continue to be monitored. The council may wish to review the monitoring in these areas accordingly.*
2. *The report highlights a number of measures the Council are undertaking to address PM_{2.5} concentrations. However the report does not reference the links between PM_{2.5} and the Public Health Outcomes Framework.*
3. *It is not clear if VCM corrections have been applied for automatic TEOM monitoring site EB3. For further guidance please refer to LAQM Technical Guidance 16 (TG16)."*

Wealden is committed to continue monitoring and in May 2017 added another 2 diffusion tubes in Forest Row, where the A22 runs through the centre of the town. All main urban conurbations within the district are now being monitored.

As new major developments are built within the district, ongoing consideration will be given to additional monitoring locations.

The map of monitoring sites in Appendix D has been updated with the most recent names and locations.

Wealden District Council is a member of the Sussex Air Quality Partnership (Sussex Air), which produced an air quality strategic plan 2010 to 2015⁵. Wealden District Council contributed to the development of this strategy, which aims to provide a consistent approach to air quality across a number of district councils.

This plan has 5 key objectives:

1. Provide advice and support and improve the expertise and knowledge base

⁵ Sussex Air Quality Partnership Air Quality Strategic Plan 2010 http://www.sussex-air.net/Reports/SAQP_Vision_Strategy_2015.pdf

2. Project development and implementation
3. Partnership working
4. Develop cross cutting work on health improvement, climate change, environment and transport
5. Communicate air quality issues and initiatives in Sussex.

Wealden District Council has taken forward a number of direct measures during the current reporting year of 2017 in pursuit of improving local air quality and improving public awareness of air quality issues, in close collaboration with the Sussex Air Quality Partnership. Details of all measures completed, in progress or planned are set out in Table 2.2.

Key completed measures regarding awareness raising and transport related measures are:

1. Website improvements

Wealden District Council supports the Sussex Air Quality website (<http://www.sussex-air.net>), which provides access to air quality statistics and relevant local information and improves public awareness of air quality.

2. Promotion of airAlert service

Wealden District Council supports the airAlert air pollution warning service, offered by the Sussex Air Quality Partnership to vulnerable people, schools, health professionals and the general public in Sussex. The airAlert service provides warnings based on O₃ levels monitored inside the Wealden District both at Isfield and Lullington Heath. In March 2018 the service had 971 registered subscribers, 70 of which were from Wealden District.

3. Local O₃ monitoring

High O₃ levels can cause difficulty breathing in vulnerable people with existing lung or heart conditions. Wealden District Council monitors O₃ levels at their Isfield rural monitoring station. Data from this station is available on the Sussex-Air website and feeds the airAlert service.

4. Updated Guidance

Wealden District Council contributed to the Air Quality and Emissions Mitigation Guidance for Sussex, first published in 2013 and updated in 2014. The guidance is helping to mitigate potential air quality impacts from developments across Sussex. It is also contributing to public health by promoting active modes of transportation like walking, cycling and using public transport, as well as car clubs and car sharing.

5. Energise Network.

Energise was established as a public/private sector partnership by local authorities across Sussex, Surrey and Kent and was led by the Sussex Air Partnership, to help support the promotion of electric vehicle uptake in the region, by making access simpler. Electric car charging points are now located in the Wealden District at Selmeston Services (A27), Wealden District Council offices in Hailsham, Herstmonceux Integrated Health Centre, Crowborough Station, and Forest Row Parish Council.

Following the adoption of the Core Strategy Local Plan⁶ in 2013, Wealden District Council has been assessing the air quality impacts of new traffic and development on protected natural habitats in the District, in particular the Pevensy Levels (Special Area of Conservation (SAC) and Ramsar site) and the Ashdown Forest (SAC and Special Protection Area (SPA)).

Key completed measures regarding protected habitats are:

1. Pevensy Levels Assessment

In 2009, Wealden District Council commissioned a study⁷ to assess the predicted air quality impact on the Pevensy Levels due to increases in traffic on the A259 associated with planned population growth up to 2026. The conclusion was that an increase in nitrogen deposition and NOx concentrations is likely, but these will still be

⁶ Wealden District (Incorporating Part of the South Downs National Park) (2013). Core Strategy Local Plan. Available at: <http://www.wealden.gov.uk/nmsruntime/saveasdialog.aspx?IID=14756&slD=2829>.

⁷ Rother District Council, Hastings Borough Council. Wealden District Council and Eastbourne Borough Council (2009). Appropriate Assessment and Air Quality Local to the Pevensy Levels Ramsar Site. Available at: <http://www.wealden.gov.uk/nmsruntime/saveasdialog.aspx?IID=14305&slD=5509>

below the Critical Levels set by the Habitats Directive⁸, therefore there is unlikely to be a significant effect on the SAC and Ramsar site.

2. Ashdown Forest Impact Mitigation

Wealden District Council currently screens all new development proposals for significant effects on levels of nitrogen deposition on Ashdown Forest, focusing on traffic emissions, and where appropriate, requires mitigation measures to be implemented⁹. The main mitigation strategy proposed by Wealden District Council is the identification of Suitable Alternative Natural Green Spaces (SANGS), and the implementation of a Strategic Access Management and Monitoring Strategy (SAMMS). In 2013, Wealden District Council published a guideline document¹⁰ to help identify SANGS sites, and a guidance note¹¹ for small scale developments on reducing traffic impacts on Ashdown Forest.

3. Ashdown Forest monitoring

Wealden District Council is investigating the impact of nitrogen deposition upon the Ashdown Forest SAC, so that the effects of development can be more fully understood and mitigated as appropriate. The Air Quality Report¹² completed for Wealden District Council in 2013 proposed a methodology for air quality and ecological monitoring. On 30th April 2014, Wealden District Council awarded a contract to Ecus Ltd, supported by Air Quality Consultants Ltd, to implement a monitoring, modelling and assessment programme which will run for a number of years¹³. Monitoring began in the summer of 2014, and the Year 1 interim report has been published in February 2016¹⁴. Monitoring has now been completed, and the

⁸ EC Habitats Directive 1992, interpreted into British law by the Conservation (Natural Habitats &c) Regulations 1994 (as amended in 2007).

⁹ Wealden District Council website. Ashdown Forest Special Protection Area, Special Area of Protection and Site of Special Scientific Interest.

http://www.wealden.gov.uk/Wealden/Residents/Planning_and_Building_Control/Planning_Development_Management/Agents_and_Parish_Council_Information/Planning_Agents_Ashdown_Forest.aspx . Retrieved July 2016:

¹⁰ Wealden District Council (2013). Guidelines for the creation of Suitable Alternative Natural Green Space (SANGS). Available at: <http://www.wealden.gov.uk/nmsruntime/saveasdialog.aspx?IID=13843&SID=3484>

¹¹ Wealden District Council (2013). Guidance note on reducing nitrogen deposition at the Ashdown Forest Special Area of Conservation and Special Protection Area. Available at:

<http://www.wealden.gov.uk/nmsruntime/saveasdialog.aspx?IID=12452&SID=3484>

¹² Wealden District Council (2013). Ashdown Forest SAC. Method for Air Quality Monitoring and Assessment of Nitrogen Deposition. Available at: <http://www.wealden.gov.uk/nmsruntime/saveasdialog.aspx?IID=13088&SID=3484>

¹³ Wealden District Council website, Ashdown Forest Monitoring FAQs:

http://www.wealden.gov.uk/Wealden/Residents/Planning_and_Building_Control/Planning_Policy/Evidence_Base/PPolicy_Ashdown_Forest_Monitoring_FAQs.aspx Retrieved July 2016.

¹⁴ Air Quality Consultants (2016). Interim Report Year 1: Ashdown Forest Air Quality Monitoring and Modelling.

http://www.wealden.gov.uk/Wealden/Residents/Planning_and_Building_Control/Planning_Policy/CoreStrategy/CoreStrategy_Library/Planning_Evidence_Base_Habitat_Regulations_Assessment.aspx

report based on the monitoring and modelling carried out by Air Quality Consultants¹⁵ concludes that the critical load for nitrogen deposition is predicted to be exceeded across almost the entire SAC for many future scenarios assessed, and therefore careful consideration will be necessary when balancing the need for development and environment/habitat protection in the District.

Wealden District Council expects the following measures to continue over the course of the next reporting year:

1. Screening planning applications for air quality impacts based on the guidance documents
2. Informing the public of high air pollution events via the Sussex Air website and the airAlert service
3. Monitoring at LAQM sites (Ashdown Forest monitoring has been completed)
4. Supporting low emission vehicles through the Energise network.

New measures for 2017 into 2018 include the promotion of cycling on the Cuckoo Trail, a footpath and cycleway across the district along an old railway line, for which Wealden District Council is bidding for funding from the Department for Transport 'Active Access for Growth' (AAfG) programme.

East Sussex County Council successfully bid for a £1.4m grant from the AAfG to deliver a programme of active travel across East Sussex from 2017-2020, and South Wealden is a focus growth area for the programme.

Two of the 4 key objectives of AAfG are:

- Demonstrate an alignment to health, air quality and reduced carbon emissions and improve air quality
- Increase walking and cycling by 2% per year and increase the proportion of people completing 30 minutes of physical activity/day

Project applications will be required to meet with the overall AAfG programme objectives of local economic growth and increased levels of physical activity through:

¹⁵ Air Quality Consultants (2018). Ashdown Forest Air Quality Monitoring and Modelling Volume 1, available at: http://www.wealden.gov.uk/Wealden/Residents/Planning_and_Building_Control/Planning_Policy/Evidence_Base/Planning_Evidence_Base_Habitat_Regulations_Assessment.aspx

- Increasing the number of people walking or cycling to work, education or training establishments
- Providing support to people who are physically inactive, and those with chronic health conditions and who want to increase their levels of physical activity
- Increasing travel choices for people who are long term unemployed to access work.

Wealden DC is also working with East Sussex County Council (ESCC) to improve local air quality through the local Transport Plan (LTP3)¹⁶

Wealden's strategic planning objective SPO7 (Sustainable Transport) as appropriate within the Core Strategy relates to promoting sustainable travel and reducing the need to travel by car which reflects the overall objectives of Local Transport Plan.

In Uckfield, further significant developments at Ridgewood (1,000 new homes & additional employment/retail development), will add strain to the existing road network – to that end, improvements have been made to Uckfield town centre and Uckfield Railway Station, including improvements to the High Street to make it more attractive for pedestrians, cyclists and bus users and enhancement of Uckfield bus station. These works are being funded from development contributions from residential developments already completed.

Further improvements to improve access for pedestrians, cyclists and public transport users from residential areas to the town centre and other key trip attractors in the town are required and will augment the investment already being made in the town centre enhancements. Similar improvements have also been made in Hailsham Town Centre in 2017.

Further actions included in the Local Transport Plan relevant to Wealden include:

- Improvements to the Hempstead Lane junction to alleviate traffic congestion on the A271 and Hailsham town centre
- Enhancements to the Cuckoo trail cycle and pedestrian route to Eastbourne

¹⁶ Available at: <https://www.eastsussex.gov.uk/roadsandtransport/localtransportplan/ltp3/downloadltp3>

- Improvements for all road users including public transport along the A2270 corridor into Eastbourne town centre
- Bus Corridor improvements on the A259 and A2021.

In relation to the Ashdown Forest Special Protection Area (SPA)¹⁷, from within the Local Plan, air quality mitigation measures are necessary for identified development within the Plan to take place if they lead to an increase in local traffic movements, including financial contributions and other measures including appropriate electric vehicle charging infrastructure, guaranteed high speed broadband connections and the provision of electric public transport, cycling and walking schemes to reduce the use of petrol and diesel vehicles.

The Council will also work with Natural England, the Department for Environment, Food and Rural Affairs (Defra) and neighbouring authorities to jointly progress a Site Nitrogen Action Plan (SNAP), which will proactively seek to further reduce levels of nitrogen deposition over the longer term.

Wealden District Council's priorities for the coming year are to continue to implement changes to transport networks and road layout, and policies to keep shifting towards more sustainable forms of transport. Wealden will continue to monitor air quality across the district and keep the public informed, and will continue to protect public health by providing real-time O₃ measurements on the Sussex Air website and alerting the general public in advance of pollution events through the airAlert service.

The principal challenge that Wealden District Council anticipates facing is balancing the planned population growth in the District with conservation of the natural habitats that constitute most of the District's territory. Two-thirds of the District is designated as the High Weald and Sussex Downs AONB, along with 34 other conservations areas. Wealden District Council will address this challenge by managing a sustainable level of development, and monitoring pollution impacts on conservation areas such as Ashdown Forest.

¹⁷ Wealden Habitats Directive AQ Reports for Ashdown Forest, available at: http://www.wealden.gov.uk/Wealden/Residents/Planning_and_Building_Control/Planning_Policy/CoreStrategy/CoreStrategyLibrary/Planning_Evidence_Base_Habitat_Regulations_Assessment.aspx

Table 2.2 – Progress on Measures to Improve Air Quality

Measure No.	Measure	EU Category	EU Classification	Organisations involved and Funding Source	Planning Phase	Implementation Phase	Key Performance Indicator	Reduction in Pollutant / Emission from Measure	Progress to Date	Estimated / Actual Completion Date	Comments / Barriers to implementation
1	Air Quality and Emissions Mitigation Guidance for Sussex	Policy Guidance and Development Control	Air Quality Planning and Policy Guidance	Sussex Air Quality Partnership	N/A	2014	N/A	N/A	Completed - Guidance published	2014	Under review by the partnership.
2	Air Quality Strategic Plan 2010	Policy Guidance and Development Control	Regional Groups Co-ordinating programmes to develop Area wide Strategies to reduce emissions and improve air quality	Sussex Air Quality Partnership	N/A	2010 - 2015	N/A	N/A	Completed - Plan published and currently implemented	2010	None.
3	Sussex Air website	Public Information	Via the Internet	Sussex Air Quality Partnership	N/A	2012-ongoing	N/A	N/A	The website is online and reporting on monitored pollution levels	2012 - Ongoing	Under review by the partnership.
4	airAlert	Public Information	Via other mechanisms	Sussex Air Quality Partnership	N/A	2011 - Ongoing	971 registered subscribers, 70 from Wealden District	N/A	The service is running and the number of subscribers increasing every year	2011 - Ongoing	None.
5	Energise Network	Promoting Low Emission Transport	Procuring alternative Refuelling infrastructure to promote Low Emission Vehicles, EV recharging, Gas fuel recharging	Sussex Air Quality Partnership and various LAs in Sussex & Kent	N/A	2014 - Ongoing	5 charging points installed in Wealden District	N/A	The service is running and several charging points are available in Wealden District	2014 - Ongoing	None.

Wealden District Council

Measure No.	Measure	EU Category	EU Classification	Organisations involved and Funding Source	Planning Phase	Implementation Phase	Key Performance Indicator	Reduction in Pollutant / Emission from Measure	Progress to Date	Estimated / Actual Completion Date	Comments / Barriers to implementation
6	SANGS guidelines	Policy Guidance and Development Control	Air Quality Planning and Policy Guidance	Wealden District Council	N/A	2013	N/A	N/A	Guideline document to help identify SANGS sites published.	2013	None.
7	Nitrogen Reduction Guidance	Policy Guidance and Development Control	Air Quality Planning and Policy Guidance	Wealden District Council	N/A	2013	N/A	N/A	Guidance note published for small scale developments on reducing traffic impacts on Ashdown Forest.	2013	None.
8	Ashdown Forest Monitoring	Other	Other	Wealden District Council	2013	2014 - 2017	N/A	N/A	Monitoring started 2014	2017	None.
9	Publicly available advice on sustainability	Public Information	Via the Internet	Wealden District Council	N/A	2017 - ongoing	N/A	N/A	The website is online and fully available	2017 - ongoing	None.
10	Encouraging home working using IT solutions	Promoting Travel Alternatives	Encourage / Facilitate home-working	Wealden District Council	N/A	2017 - ongoing	N/A	N/A	IT solutions in place for staff wishing to home-work	2017 - ongoing	None.
11	Employee tax incentive scheme for purchasing bikes	Promoting Travel Alternatives	Promotion of cycling	Wealden District Council	N/A	2017 - ongoing	N/A	N/A	Ongoing	2017 - ongoing	None.
12	Car sharing for employees and associated priority staff parking	Promoting Travel Alternatives	Workplace Travel Planning	Wealden District Council	N/A	2017 - ongoing	N/A	N/A	Ongoing	2017 - ongoing	None.
13	Implementation of ESCC Local Transport Plan 3	Traffic Management	Strategic highway improvements, Re-prioritising road space away from	East Sussex County Council & Wealden District Council	pre-2016	2016 - 2021	N/A	N/A	Ongoing	2016 - ongoing	Under review

Wealden District Council

Measure No.	Measure	EU Category	EU Classification	Organisations involved and Funding Source	Planning Phase	Implementation Phase	Key Performance Indicator	Reduction in Pollutant / Emission from Measure	Progress to Date	Estimated / Actual Completion Date	Comments / Barriers to implementation
			cars, including Access management, Selective vehicle priority, bus priority, high vehicle occupancy lane								
14	Bus route improvements in Wealden	Transport Planning and Infrastructure	Bus route improvements	East Sussex County Council & Wealden District Council	pre-2016	2016 - 2021	N/A	N/A	Ongoing	2016 - ongoing	Under review
15	Cycle network improvements in Wealden	Transport Planning and Infrastructure	Cycle network	East Sussex County Council & Wealden District Council	pre-2016	2016 - 2021	N/A	N/A	Ongoing	2016 - ongoing	Under review
16	Public transport improvements in Wealden	Transport Planning and Infrastructure	Public transport improvements- interchanges stations and services	East Sussex County Council & Wealden District Council	pre-2016	2016 - 2021	N/A	N/A	Ongoing	2016 - ongoing	Under review

2.3 PM_{2.5} – Local Authority Approach to Reducing Emissions and/or Concentrations

As detailed in Policy Guidance LAQM.PG16 (Chapter 7), local authorities are expected to work towards reducing emissions and/or concentrations of PM_{2.5} (particulate matter with an aerodynamic diameter of 2.5µm or less). There is clear evidence that PM_{2.5} has a significant impact on human health, including premature mortality, allergic reactions, and cardiovascular diseases.

Wealden District Council is taking the following measures to address PM_{2.5}:

- Supporting the Energise Network of electric vehicle charging points, together with the Sussex Air Quality Partnership;
- Requiring the assessment of PM_{2.5} as part of Air Quality Assessments for planning applications.

Further measures will be considered in future years.

3 Air Quality Monitoring Data and Comparison with Air Quality Objectives and National Compliance

3.1 Summary of Monitoring Undertaken

3.1.1 Automatic Monitoring Sites

This section sets out what monitoring has taken place and how it compares with objectives.

Wealden District Council undertook automatic (continuous) monitoring at 2 sites during 2017: Isfield (for O₃) and Lullington Heath (for NO₂, SO₂ and O₃). Particulate matter (PM₁₀ and PM_{2.5}) was not monitored in the district, so this report includes the results from two sites in the neighbouring Eastbourne District: Devonshire Park and Holly Place. Table A.1 in Appendix A shows the details of the sites.

Wealden - Lullington Heath and Eastbourne - Holly Place are part of the Automatic Urban and Rural Network (AURN), managed by the Environment Agency. National monitoring results are available at <https://uk-air.defra.gov.uk/>.

Wealden - Isfield and Eastbourne - Devonshire Park are part of the Sussex Air Quality Monitoring Network (SAQMN), managed on behalf of Sussex Air by King's College London Environmental Research Group (KCL-ERG). Regional monitoring results are available at www.sussex-air.net.

Maps showing the location of the monitoring sites are provided in Appendix D. Further details on how the monitors are calibrated and how the data has been adjusted are included in Appendix C.

3.1.2 Non-Automatic Monitoring Sites

Wealden District Council undertook non- automatic (passive) monitoring of NO₂ at 10 sites during 2017. Table A.2 in Appendix A shows the details of the sites.

The towns of Crowborough and Uckfield each contain one roadside site (W2 and W4 respectively) and one urban background site (W1 and W3), whilst two roadside sites are operated in Polegate (W5) and Hailsham (W6, installed in 2012). The original diffusion tube network has been operational since 2001. Two further roadside sites (W7 and W8) – previously operated by ESCC – are currently maintained by Wealden District Council. Due to site W7 not being representative of relevant exposure and

being difficult to access, the decision was taken to relocate the site further down the same road and nearer to residential properties as a kerbside location in March 2017. Two new diffusion tube sites have also been added in May 2017. One is a kerbside on the main road (A22) that runs through Forest Row. The other is a background location at 14 Riverside, Forest Row.

Data capture for 2017 was generally good; however, February data is missing for all diffusion tube sites.

Maps showing the location of the monitoring sites are provided in Appendix D: Map(s) of Monitoring Locations and AQMAs. Further details on Quality Assurance/Quality Control (QA/QC) for the diffusion tubes, including bias adjustments and any other adjustments applied (e.g. “annualisation” and/or distance correction), are included in Appendix C.

3.2 Individual Pollutants

The air quality monitoring results presented in this section are, where relevant, adjusted for bias, “annualisation” and distance correction. Further details on adjustments are provided in Appendix C.

3.2.1 Nitrogen Dioxide (NO₂)

Table A.3 in Appendix A compares the ratified and adjusted monitored NO₂ annual mean concentrations for the past 5 years with the air quality objective of 40µg/m³.

For diffusion tubes, the full 2017 dataset of monthly mean values is provided in Appendix B.

The results indicate that the annual mean NO₂ concentrations at the Wealden - Lullington Heath and Eastbourne - Holly Place automatic monitoring sites were all well within the UK air quality objective (40 µg/m³) in all years between 2012 and 2017. No valid data was available from the Eastbourne - Devonshire Park station for 2015 or 2016; however, annual mean NO₂ concentrations between 2012 and 2014, inclusive, and in 2017 were well below the annual mean objective.

There was one exceedance of the annual mean NO₂ objective monitored at the new location W10 on the A22 in Forest Row (40.6 µg/m³), and one near-exceedance monitored at W4 (37.1 µg/m³ Uckfield Town Centre). However, when distance

corrected, the concentration at the nearest relevant exposure to W7 decreases to 37.4 $\mu\text{g}/\text{m}^3$, and at W4 to 26.8 $\mu\text{g}/\text{m}^3$.

After correcting for distance to the nearest sensitive receptors, the monitored annual mean NO_2 concentrations in 2017 ranged from 10.7 $\mu\text{g}/\text{m}^3$ (new location W9) to 37.4 $\mu\text{g}/\text{m}^3$ (new location W10), although with the exception of W10 all distance-corrected concentrations were below 27 $\mu\text{g}/\text{m}^3$, which is well within the objective.

For diffusion tubes, the full 2017 dataset of monthly mean values is provided in Appendix B, which includes the distance-corrected concentrations.

Table A.4 in Appendix A compares the ratified continuous monitored NO_2 hourly mean concentrations for the past 5 years with the air quality objective of 200 $\mu\text{g}/\text{m}^3$, not to be exceeded more than 18 times per year.

None of the automatic monitoring sites exceeded the 200 $\mu\text{g}/\text{m}^3$ standard on any occasion in 2017, or in any year since 2012. The results indicate that the 1-hour NO_2 air quality objective is unlikely to be exceeded at any location in the district.

Diffusion tubes do not provide hourly measurements of NO_2 ; however, the Defra Technical Guidance states that where annual mean NO_2 concentrations measured by diffusion tubes exceed 60 $\mu\text{g}/\text{m}^3$ there is a likelihood that the 1-hour objective may be exceeded. All of the annual mean NO_2 concentrations at diffusion tube monitoring locations between 2012 and 2017, inclusive, were well below 60 $\mu\text{g}/\text{m}^3$ and so the 1-hour objective is very unlikely to have been exceeded.

Figure 1 shows the trend in NO_2 concentrations monitored at the Wealden - Lullington Heath, Eastbourne - Devonshire Park and Eastbourne - Holly Place automatic monitoring stations. The results indicate there is a gradual downward trend in NO_2 concentrations over the time period shown, with little variation from year to year, although there is evidence of a slight increase in concentrations between 2015 and 2017. Concentrations have also been well below the annual mean air quality objective of 40 $\mu\text{g}/\text{m}^3$ in all years.

Figure 1: Trends in Annual Mean NO₂ Concentrations measured at Automatic Monitoring Sites

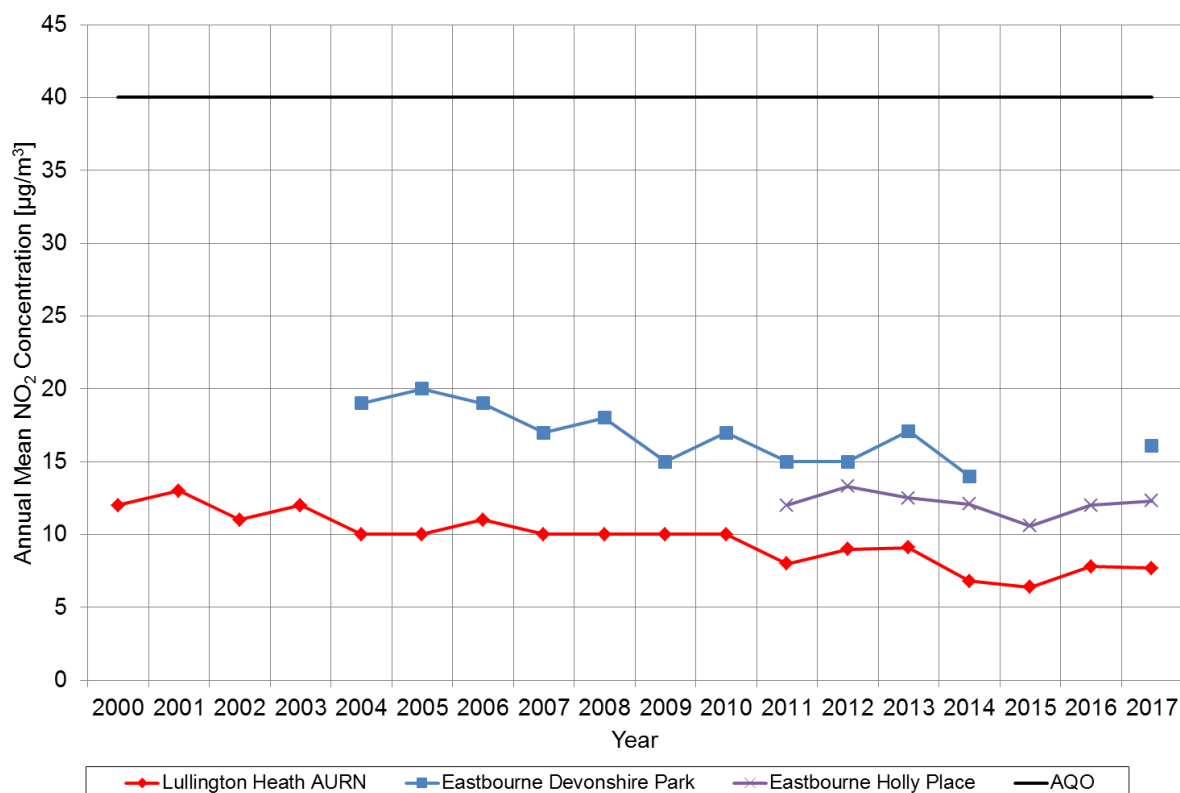
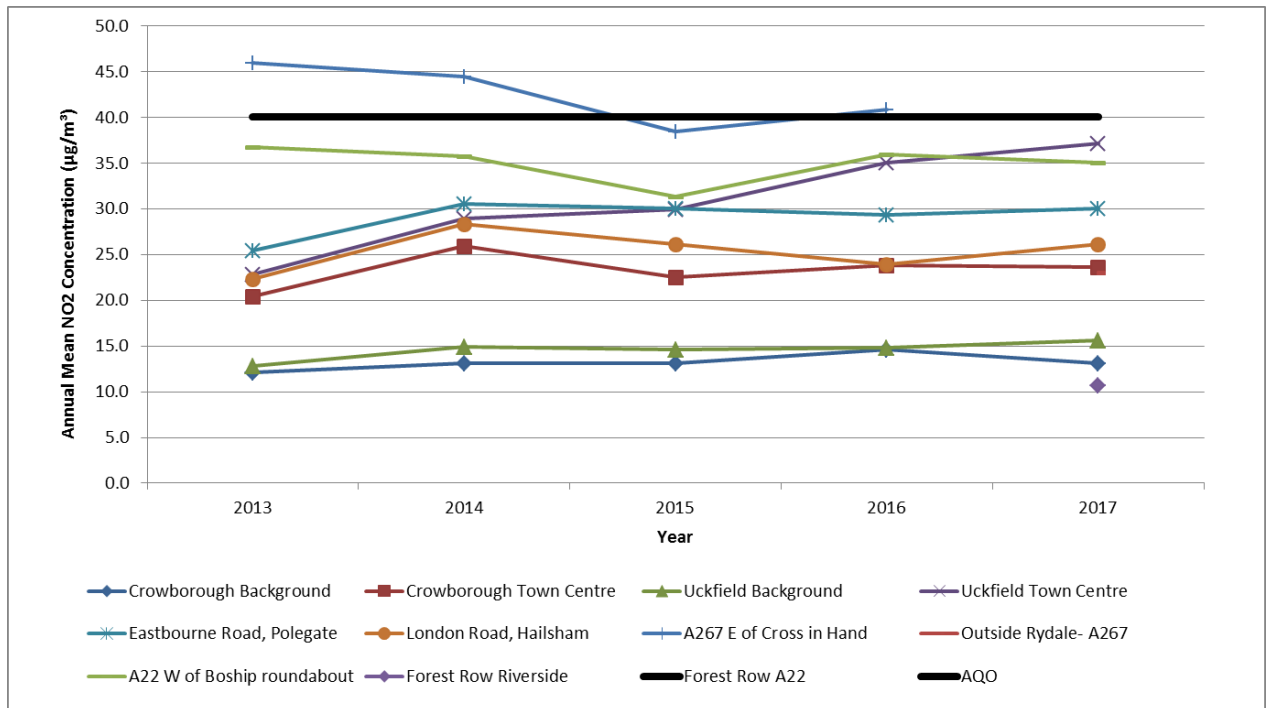


Figure 2 shows trends in annual mean NO₂ concentrations measured at non-automatic (diffusion tube) sites. The W7 (A267 East of Cross in Hand) and W8 (A22 West of Boship Roundabout) sites are located outside town centres by busy A-roads, and have historically recorded the highest values. They showed a trend for gradually decreasing concentrations between 2013 and 2015, although concentrations increased again in 2016, and also 2017 (for W8 only). Due to general difficulties accessing the W7 site, this site was relocated in 2017 to a new location (outside Rydale, A267), where the concentration monitored in 2017 is much lower than in previous years at the A267 East of Cross in Hand location, and more representative of relevant exposure.

In addition, annual mean NO₂ concentrations at W4 (Uckfield Town Centre), have increased significantly between 2013 (22.8 µg/m³) and 2017 (37.1 µg/m³).

At other roadside sites, there has been some year-to-year variability, but generally no significant increasing or decreasing trend in concentrations. Annual average NO₂ concentrations at the background diffusion tube sites (W1 and W3), also show very little overall trend. The trend in concentrations at the new background site W9 will be monitored over the coming years.

Figure 2: Trends in Annual Mean NO₂ Concentrations measured at Diffusion Tube Monitoring Sites



3.2.2 Particulate Matter (PM₁₀)

There has been no PM₁₀ monitoring undertaken within the Council’s area.

Concentrations monitored at two urban background sites in Eastbourne (Devonshire Park and Holly Place) are therefore provided for indicative purposes. No data was available for Eastbourne Holly Place for 2017.

Table A.5 in Appendix A compares the ratified and adjusted monitored PM₁₀ annual mean concentrations for the past 5 years with the air quality objective of 40µg/m³.

The results indicate that annual mean PM₁₀ concentrations were well below the UK air quality objective between 2012 and 2017.

Figure 3 shows the trend in annual mean PM₁₀ concentrations. A slight decreasing trend is apparent from concentrations recorded at Holly Place in the past seven years, but with considerable year on year variability. However, the longer-term data (2001 to 2014) at Devonshire Park is less conclusive. Concentrations have been consistently well below the annual mean air quality objective.

Figure 3: Trends in Annual Mean Particulate Matter (PM₁₀) Concentrations measured at Automatic Monitoring Sites

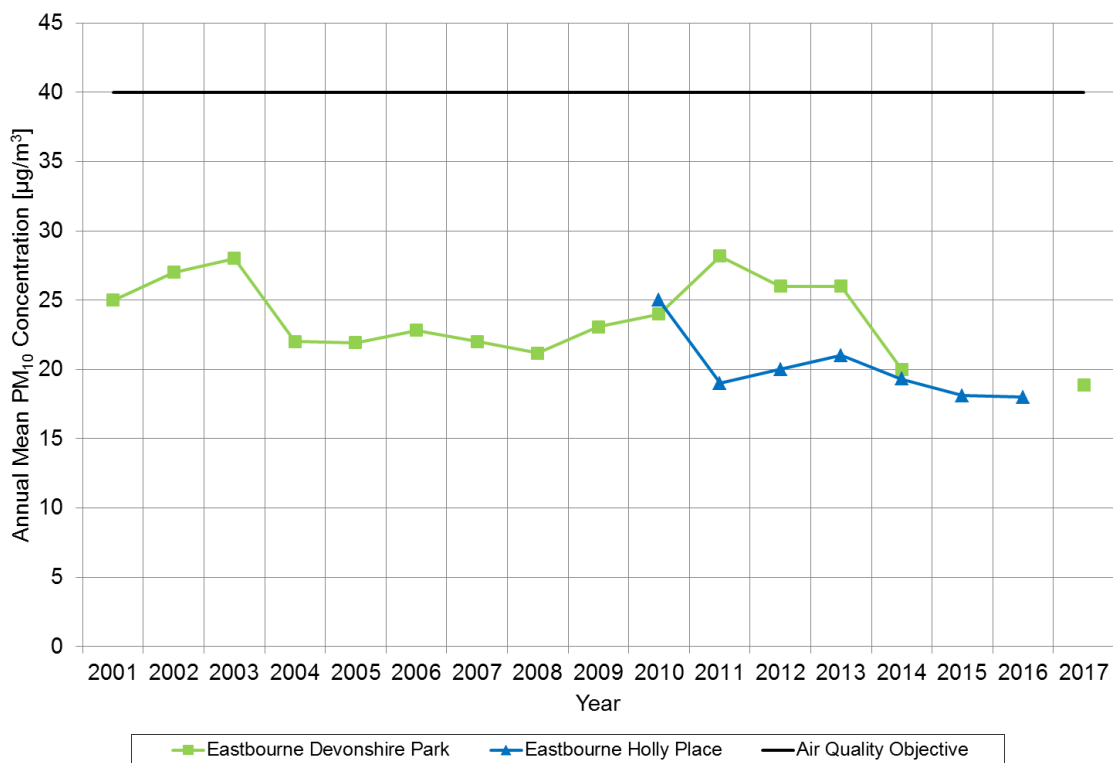
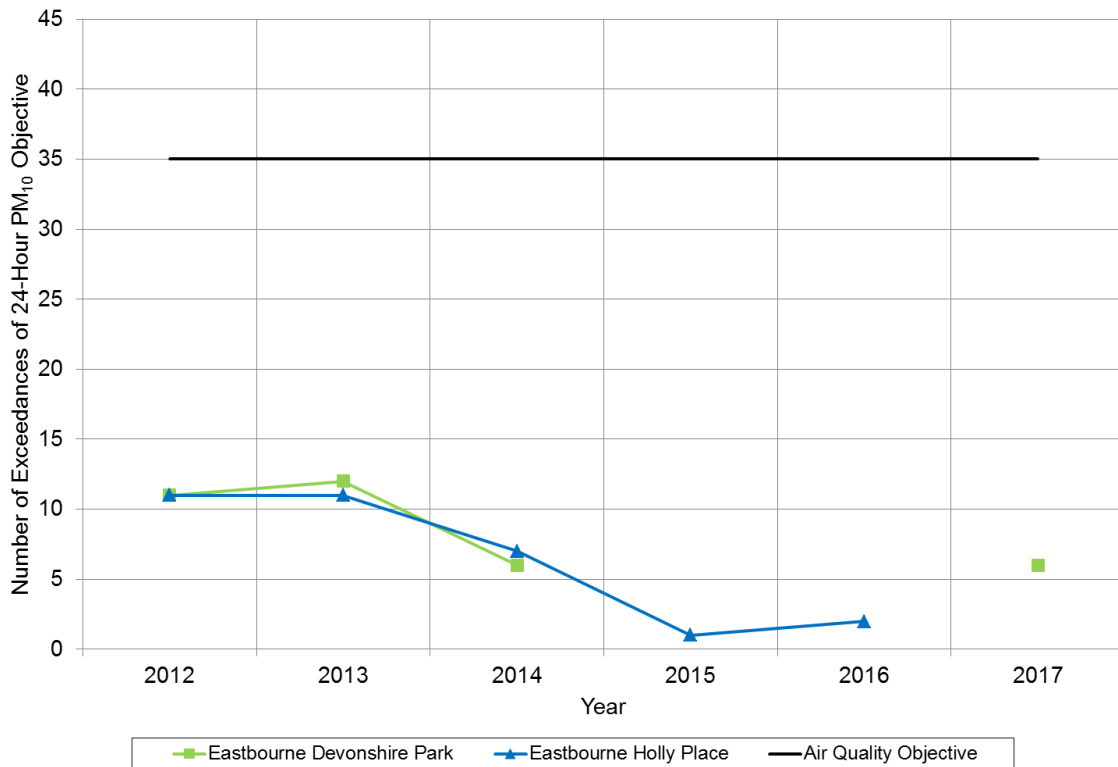


Table A.6 in Appendix A compares the ratified continuous monitored PM₁₀ daily mean concentrations for the past 5 years with the air quality objective of 50µg/m³, not to be exceeded more than 35 times per year.

These results show that both Eastbourne sites achieved the daily PM₁₀ objective every year from 2012 to 2017.

Figure 4 shows the trend in number of exceedances of the daily mean PM₁₀ objective. The number of days which exceeded the objective has generally been decreasing at both sites between 2012 and 2017.

Figure 4: Trends in Number of Exceedances of the 24-Hour Mean Particulate Matter (PM₁₀) Objective measured at Automatic Monitoring Sites



3.2.3 Particulate Matter (PM_{2.5})

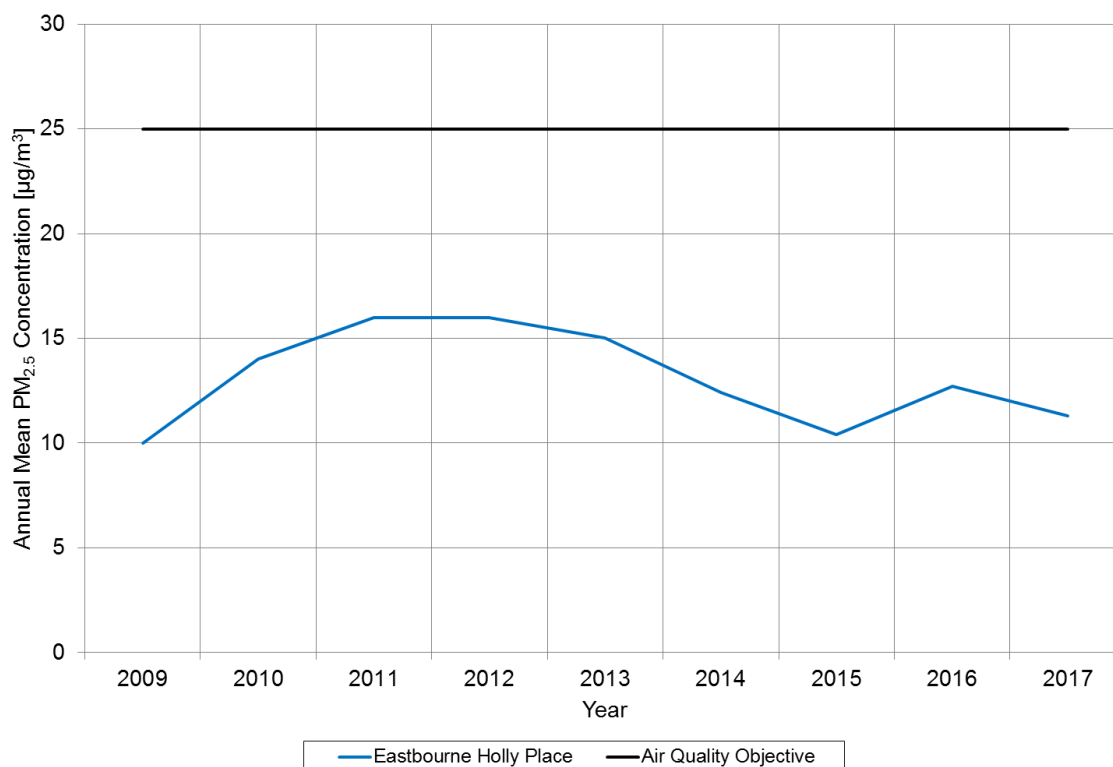
There is no PM_{2.5} monitoring undertaken within Wealden District. Concentrations monitored at the Holly Place urban background site in Eastbourne are therefore provided for indicative purposes.

Table A.7 in Appendix A presents the ratified and adjusted monitored PM_{2.5} annual mean concentrations for the past 5 years. Between 2013 and 2017, the measured

levels have been between 10 $\mu\text{g}/\text{m}^3$ and 15 $\mu\text{g}/\text{m}^3$ which is below the Air Quality Objective of 25 $\mu\text{g}/\text{m}^3$.

Figure 5 shows the trend in annual mean $\text{PM}_{2.5}$ concentrations. No clear trend is evident in the results between 2009 and 2017.

Figure 5: Trends in Annual Mean Particulate Matter ($\text{PM}_{2.5}$) Concentrations measured at Automatic Monitoring Sites



3.2.4 Sulphur Dioxide (SO_2)

Table A.8 in Appendix A compares the ratified continuous monitored SO_2 concentrations at the Lullington Heath rural site for 2017 with the air quality objectives for SO_2 . There have been no exceedances in 2017 of any of the three UK Air Quality Objectives for SO_2 (15-minute, 1-hour and 24-hour). Further details about the SO_2 objectives are reported in Appendix E.

3.2.5 Ozone (O_3)

Table A.9 in Appendix A presents the ratified continuous monitored annual mean O_3 concentrations for the past 5 years at the Isfield and Lullington Heath rural sites. Between 2013 and 2017, the annual mean concentrations monitored at Isfield have been between 46 $\mu\text{g}/\text{m}^3$ and 53 $\mu\text{g}/\text{m}^3$, and at Lullington Heath between 50 $\mu\text{g}/\text{m}^3$

and $57 \mu\text{g}/\text{m}^3$. There is no annual mean objective or target value for annual mean O_3 concentration.

Figure 6 shows the trend in annual mean O_3 concentrations at the two monitoring stations. No clear trend is evident in the results at Isfield between 2011 and 2016, while a slight increase has been observed at Lullington Heath until 2015. Both sites have shown lower concentrations in 2016 and 2017 than in 2015.

Figure 6: Trends in Annual Mean O_3 Concentrations measured at Automatic Monitoring Sites

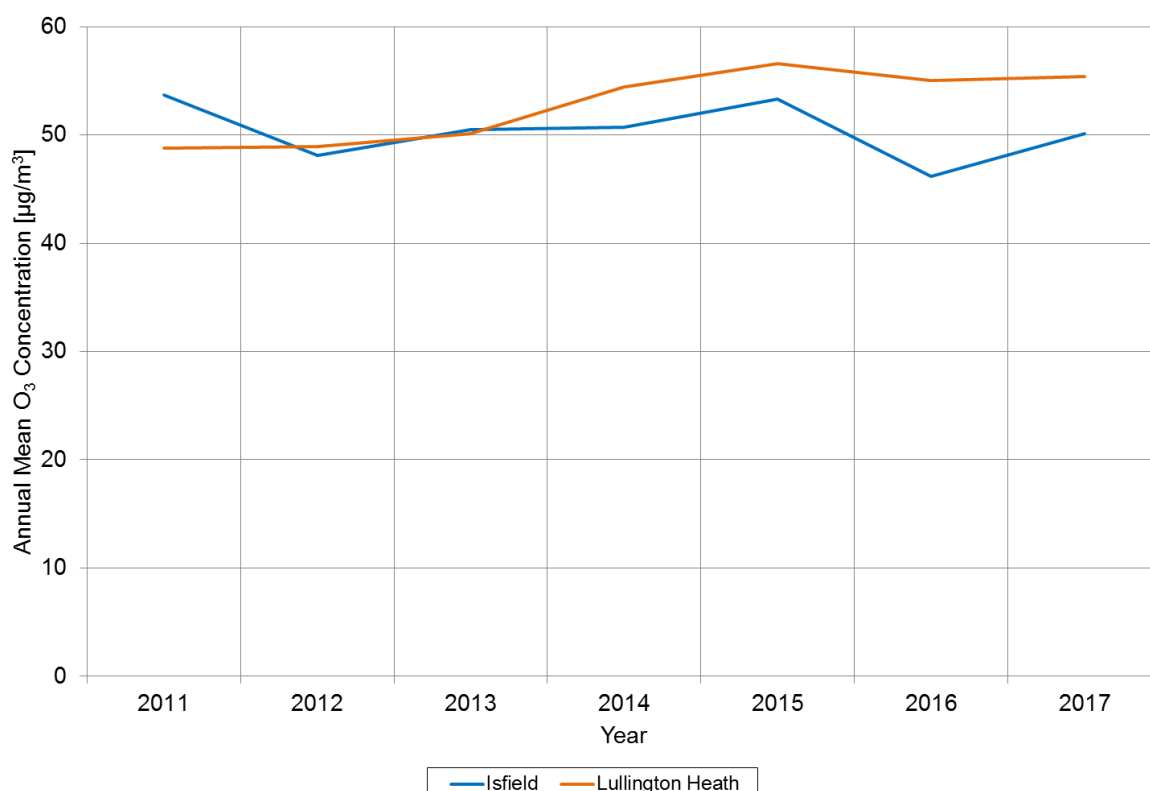
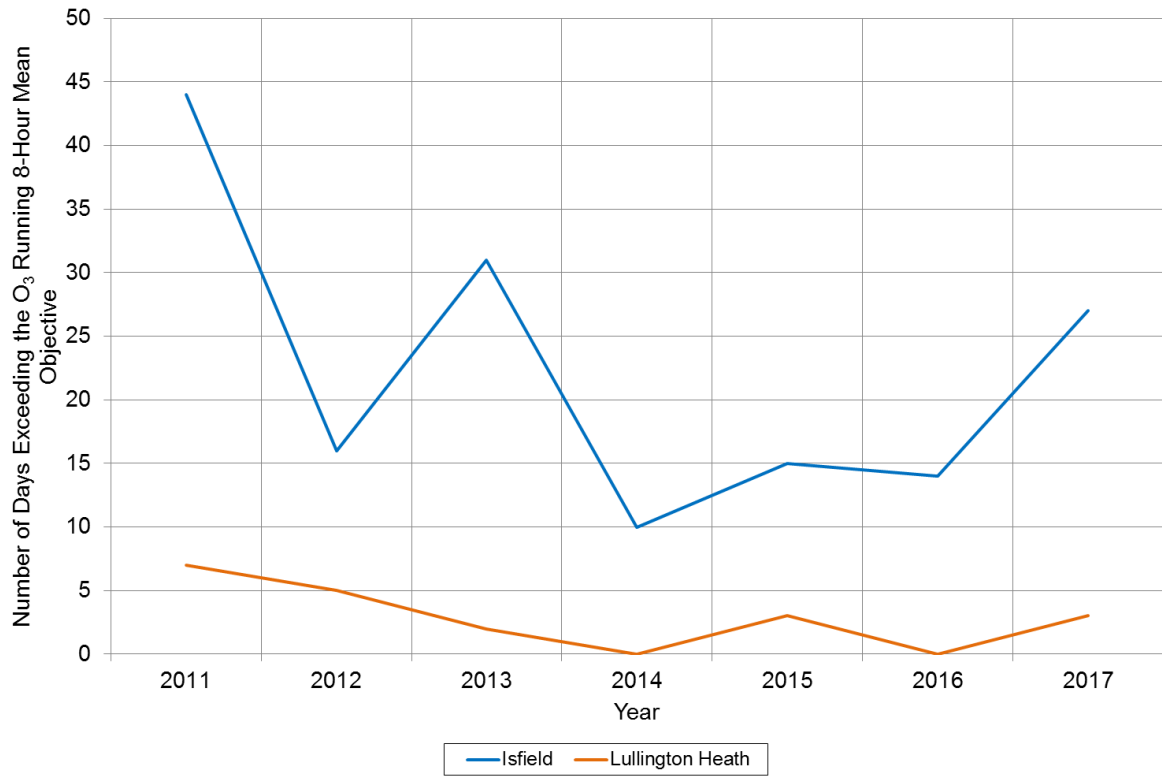


Table A.10 in Appendix A compares the ratified continuous monitored O_3 running 8-hour mean concentrations for the past 5 years with the UK air quality objective of $100 \mu\text{g}/\text{m}^3$, not to be exceeded on more than 10 days per year. The monitoring results show that the Isfield station exceeded the O_3 objective every year from 2012 to 2017, except for 2014. The Lullington Heath station has measured days exceeding the objective in 2012, 2013, 2015 and 2017, but less than the 10 days allowed.

Figure 7 shows the trend in number of days exceeding the O_3 objective. Both stations show a clear reduction in the number of exceedances between 2011 and 2016, with an increase in 2017.

Figure 7: Trends in Number of Days Exceeding the Running 8-Hour Mean Ozone (O₃) Objective



Appendix A: Monitoring Results

Table A.1 – Details of Automatic Monitoring Sites

Site ID	Site Name	Site Type	X OS Grid Ref	Y OS Grid Ref	Pollutants Monitored	In AQMA?	Monitoring Technique	Distance to Relevant Exposure (m) ⁽¹⁾	Distance to kerb of nearest road (m) ⁽²⁾	Inlet Height (m)
LL1	Lullington Heath AURN	Rural	553855	101740	NO ₂ ; SO ₂ ; O ₃	NO	Chemiluminiscence; UV Fluorescence; UV Absorption	> 1000	> 1000	3
AR2	Wealden - Isfield	Rural	544890	117380	O ₃	NO	UV Absorption	60	20	2
EB1	Eastbourne - Devonshire Park	Urban Background	561180	98360	NO ₂ ; PM ₁₀ ; O ₃	NO	Chemiluminiscence; FDMS; UV Absorption	40	10	1.5
EB3	Holly Place AURN	Urban Background	560085	103118	NO ₂ ; PM ₁₀ ; PM _{2.5}	NO	Chemiluminiscence; TEOM FDMS; TEOM FDMS	10	10	4

Notes:

(1) 0m if the monitoring site is at a location of exposure (e.g. installed on the façade of a residential property).

(2) N/A if not applicable.

Table A.2 – Details of Non-Automatic Monitoring Sites

Site ID	Site Name	Site Type	X OS Grid Ref	Y OS Grid Ref	Pollutants Monitored	In AQMA?	Distance to Relevant Exposure (m) ⁽¹⁾	Distance to kerb of nearest road (m) ⁽²⁾	Tube collocated with a Continuous Analyser?	Height (m)
W1	Crowborough Background	Urban Background	552591	130667	NO ₂	NO	5 – 10	2	NO	2.5
W2	Crowborough Town Centre	Roadside	551626	131090	NO ₂	NO	5 – 10	2	NO	2.5
W3	Uckfield Background	Urban Background	547828	121954	NO ₂	NO	10 – 20	1	NO	2.5
W4	Uckfield Town Centre	Roadside	547250	120977	NO ₂	NO	5 – 10	2	NO	2.5
W5	Eastbourne Road, Polegate	Roadside	558079	104481	NO ₂	NO	13	1	NO	2
W6	London Road, Hailsham	Roadside	558845	109783	NO ₂	NO	0.5	1	NO	2.5
W7 ⁽³⁾	Outside Rydale- A267	Kerbside	557503	121318	NO ₂	NO	5 – 10	1	NO	2
W8	A22 W of Boship roundabout	Roadside	556933	111165	NO ₂	NO	8	2	NO	2
W9	Forest Row Riverside	Background	542336	135324	NO ₂	NO	5	N/A	NO	2
W10	Forest Row A22	Kerbside	542464	135279	NO ₂	NO	1	2	NO	2

Notes:

(1) 0m if the monitoring site is at a location of exposure (e.g. installed on/adjacent to the façade of a residential property).

(2) N/A if not applicable.

(3) Location of W7 was moved in 2017 as previous location deemed unsafe.

Table A.3 – Annual Mean NO₂ Monitoring Results

Site ID	Site Type	Monitoring Type	Valid Data Capture for Monitoring Period (%) ⁽¹⁾	Valid Data Capture 2017 (%) ⁽²⁾	NO ₂ Annual Mean Concentration (µg/m ³) ⁽³⁾				
					2013	2014	2015	2016	2017
LL1	Rural	Automatic	98	98	9.1	6.8	6.4	7.8	7.7
EB1	Urban Background	Automatic	74	74	17.1	14	-	-	16.1
EB3	Urban Background	Automatic	99	99	12.5	12.1 (11.8)	10.6	12	12.3
W1	Urban Background	Diffusion Tube	92	92	12.1	13.1	13.1	14.6	13.1
W2	Roadside	Diffusion Tube	75	75	20.4	25.9	22.5	23.8	23.6
W3	Urban Background	Diffusion Tube	83	83	12.8	14.9	14.6	14.8	15.6
W4	Roadside	Diffusion Tube	92	92	22.8	28.9	29.9	35.0	37.1
W5	Roadside	Diffusion Tube	83	83	25.4	30.5	30.0	29.3	30.0
W6	Roadside	Diffusion Tube	92	92	22.3	28.3	26.1	23.9	26.1
W7 ⁽⁴⁾	Kerbside	Diffusion Tube	67	67	45.9	44.4	38.4	40.8	23.0
W8	Roadside	Diffusion Tube	92	92	36.7	35.7	31.3	35.9	35.0
W9	Urban Background	Diffusion Tube	100	67	-	-	-	-	10.7
W10	Kerbside	Diffusion Tube	88	58	-	-	-	-	40.6

Diffusion tube data has been bias corrected

Annualisation has been conducted where data capture is <75%

Notes:

Exceedances of the NO₂ annual mean objective of 40µg/m³ are shown in **bold**.

NO₂ annual means exceeding 60µg/m³, indicating a potential exceedance of the NO₂ 1-hour mean objective are shown in **bold and underlined**.

(1) Data capture for the monitoring period, in cases where monitoring was only carried out for part of the year.

(2) Data capture for the full calendar year (e.g. if monitoring was carried out for 6 months, the maximum data capture for the full calendar year is 50%).

(3) Means for diffusion tubes have been corrected for bias. All means have been “annualised” as per Boxes 7.9 and 7.10 in LAQM.TG16 if valid data capture for the full calendar year is less than 75%. See Appendix C for details.

(4) Location of W7 was moved in 2017 as previous location deemed unsafe.

Figure A.1 – Trends in Annual Mean NO₂ Concentrations

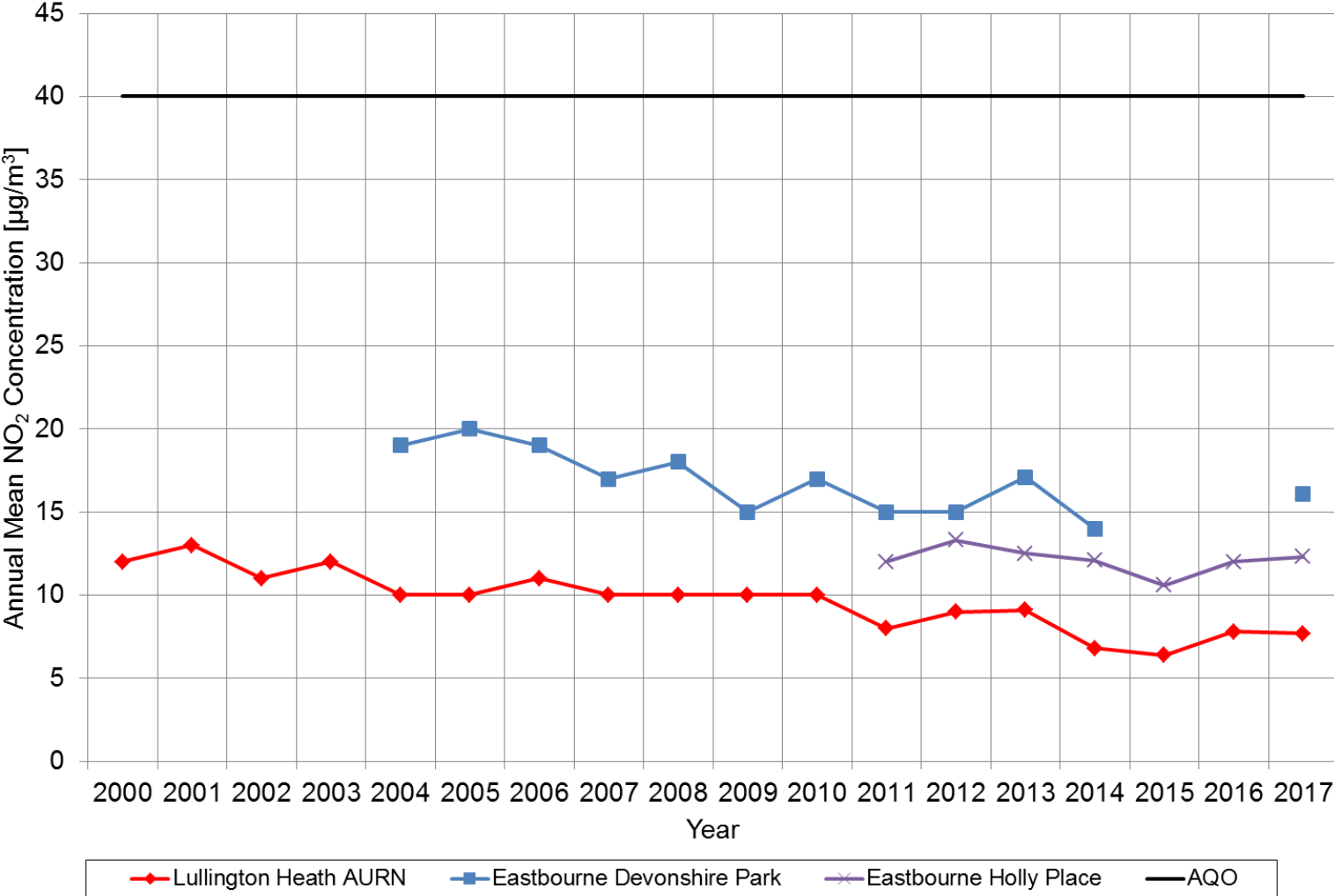


Table A.4 – 1-Hour Mean NO₂ Monitoring Results

Site ID	Site Type	Monitoring Type	Valid Data Capture for Monitoring Period (%) ⁽¹⁾	Valid Data Capture 2017 (%) ⁽²⁾	NO ₂ 1-Hour Means > 200µg/m ³ ⁽³⁾				
					2013	2014	2015	2016	2017
LL1	Rural	Automatic	98	98	0	0 (43)	0 (42.7)	0	0
EB1	Urban Background	Automatic	74	74	0	0	-	-	0 (68.9)
EB3	Urban Background	Automatic	99	99	0	0 (67.8)	0 (62)	0	0

Notes:

Exceedances of the NO₂ 1-hour mean objective (200µg/m³ not to be exceeded more than 18 times/year) are shown in **bold**.

(1) Data capture for the monitoring period, in cases where monitoring was only carried out for part of the year.

(2) Data capture for the full calendar year (e.g. if monitoring was carried out for 6 months, the maximum data capture for the full calendar year is 50%).

(3) If the period of valid data is less than 85%, the 99.8th percentile of 1-hour means is provided in brackets.

Table A.5 – Annual Mean PM₁₀ Monitoring Results

Site ID	Site Type	Valid Data Capture for Monitoring Period (%) ⁽¹⁾	Valid Data Capture 2017 (%) ⁽²⁾	PM ₁₀ Annual Mean Concentration (µg/m ³) ⁽³⁾				
				2013	2014	2015	2016	2017
EB1	Urban Background	59.8	59.8	26	19.8	-	-	18.9
EB3	Urban Background	0	0	21	19.3	18.1	18	-

Annualisation has been conducted where data capture is <75%

Notes:

Exceedances of the PM₁₀ annual mean objective of 40µg/m³ are shown in **bold**.

(1) Data capture for the monitoring period, in cases where monitoring was only carried out for part of the year.

(2) Data capture for the full calendar year (e.g. if monitoring was carried out for 6 months, the maximum data capture for the full calendar year is 50%).

(3) All means have been “annualised” as per Boxes 7.9 and 7.10 in LAQM.TG16, valid data capture for the full calendar year is less than 75%. See Appendix C for details.

Figure A.2 – Trends in Annual Mean PM₁₀ Concentrations

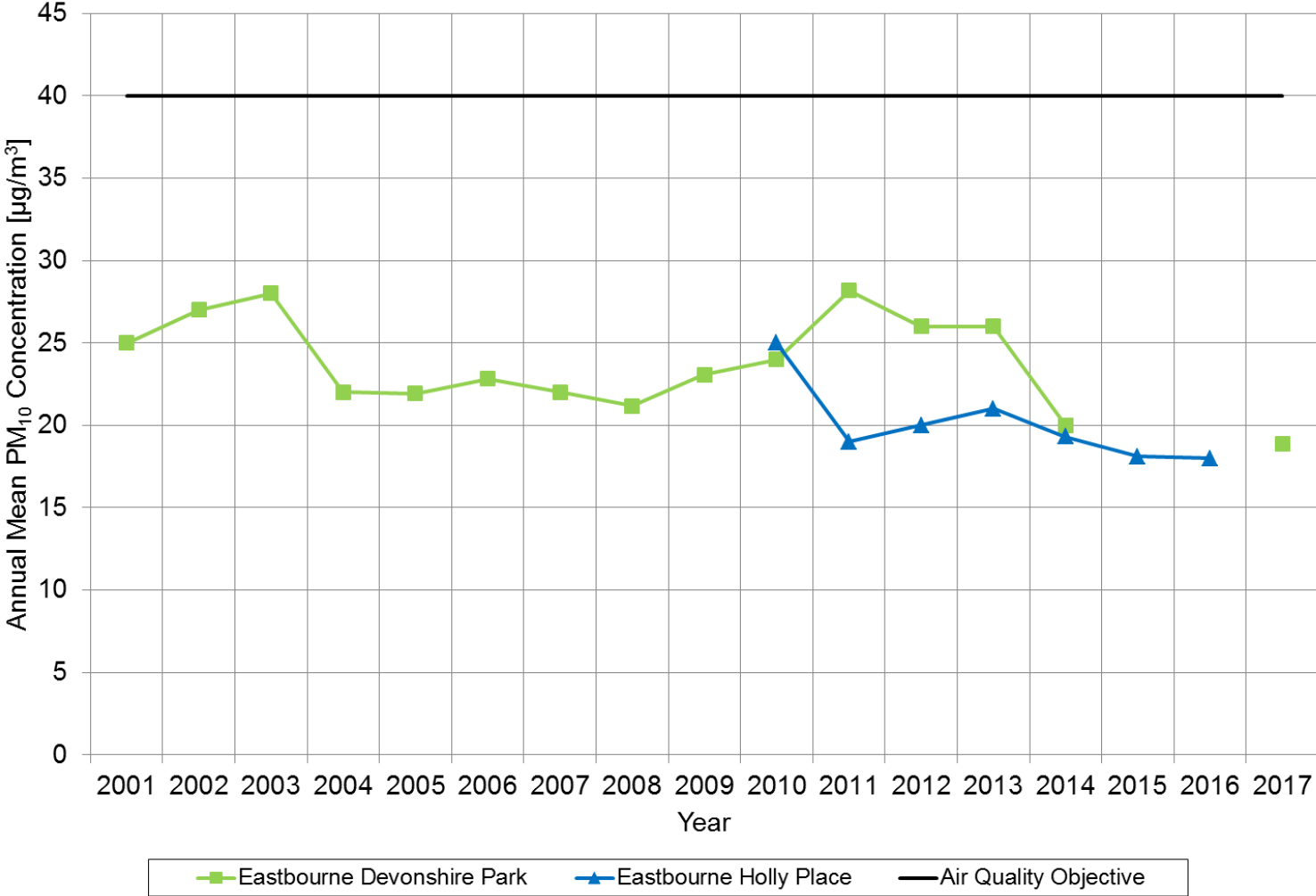


Table A.6 – 24-Hour Mean PM₁₀ Monitoring Results

Site ID	Site Type	Valid Data Capture for Monitoring Period (%) ⁽¹⁾	Valid Data Capture 2017 (%) ⁽²⁾	PM ₁₀ 24-Hour Means > 50µg/m ³ ⁽³⁾				
				2013	2014	2015	2016	2017
EB1	Urban Background	59.8	59.8	12 (42.0)	6 (32.9)	-	-	0 (22)
EB3	Urban Background	0	0	11 (41.0)	7 (29.1)	1 (26)	2	-

Notes:

Exceedances of the PM₁₀ 24-hour mean objective (50µg/m³ not to be exceeded more than 35 times/year) are shown in **bold**.

(1) Data capture for the monitoring period, in cases where monitoring was only carried out for part of the year.

(2) Data capture for the full calendar year (e.g. if monitoring was carried out for 6 months, the maximum data capture for the full calendar year is 50%).

(3) If the period of valid data is less than 85%, the 90.4th percentile of 24-hour means is provided in brackets.

Figure A.3 – Trends in Number of 24-Hour Mean PM₁₀ Results >50µg/m³

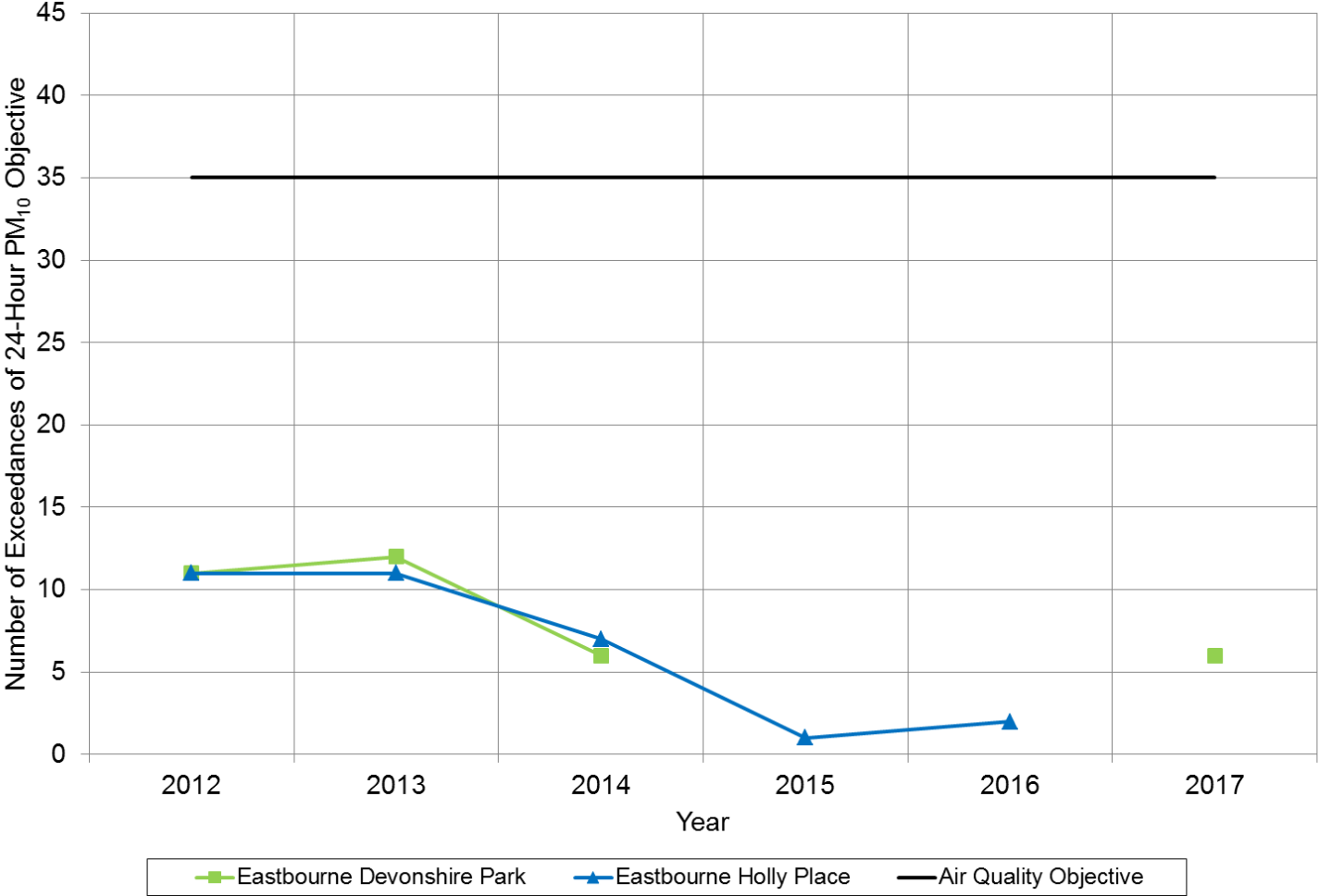


Table A.7 – PM_{2.5} Monitoring Results

Site ID	Site Type	Valid Data Capture for Monitoring Period (%) ⁽¹⁾	Valid Data Capture 2017 (%) ⁽²⁾	PM _{2.5} Annual Mean Concentration (µg/m ³) ⁽³⁾				
				2013	2014	2015	2016	2017
EB3	Urban Background	96.3	96.3	15	12.4	10.4 (12.3)	12.7 (14.4)	11.3

Annualisation has been conducted where data capture is <75%

Notes:

(1) Data capture for the monitoring period, in cases where monitoring was only carried out for part of the year.

(2) Data capture for the full calendar year (e.g. if monitoring was carried out for 6 months, the maximum data capture for the full calendar year is 50%).

(3) All means have been “annualised” as per Boxes 7.9 and 7.10 in LAQM.TG16, valid data capture for the full calendar year is less than 75%. See Appendix C for details.

Figure A.4 – Trends in Annual Mean PM_{2.5} Concentrations

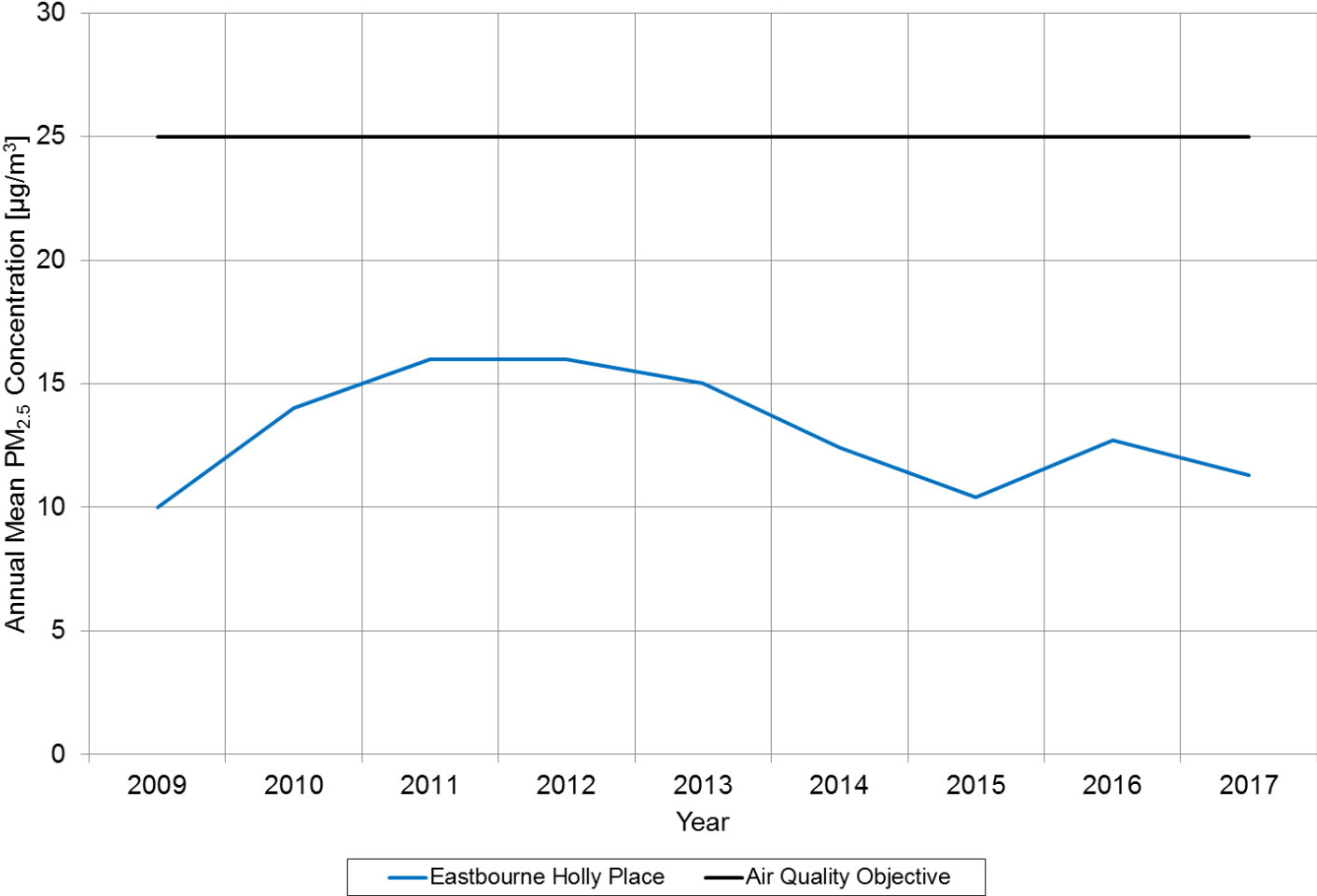


Table A.8 – SO₂ Monitoring Results

Site ID	Site Type	Valid Data Capture for monitoring Period (%) ⁽¹⁾	Valid Data Capture 2017 (%) ⁽²⁾	Number of Exceedances 2017 (percentile in bracket) ⁽³⁾		
				15-minute Objective (266 µg/m ³)	1-hour Objective (350 µg/m ³)	24-hour Objective (125 µg/m ³)
LL1	Rural	84.6	84.6	0 (8.0)	0 (6.1)	0 (3.5)

Notes:

Exceedances of the SO₂ objectives are shown in **bold** (15-min mean = 35 allowed a year, 1-hour mean = 24 allowed a year, 24-hour mean = 3 allowed a year)

(1) Data capture for the monitoring period, in cases where monitoring was only carried out for part of the year.

(2) Data capture for the full calendar year (e.g. if monitoring was carried out for 6 months, the maximum data capture for the full calendar year is 50%).

(3) If the period of valid data is less than 85%, the relevant percentiles are provided in brackets.

Table A.9 – Annual Mean O₃ Monitoring Results

Site ID	Site Type	Valid Data Capture for Monitoring Period (%) ⁽¹⁾	Valid Data Capture 2017 (%) ⁽²⁾	O ₃ Annual Mean Concentration (µg/m ³) ⁽³⁾				
				2013	2014	2015	2016	2017
AR2	Rural	99	99	50.5	50.7	53.3	46.2	50.1
LL1	Rural	94	94	50.1	54.4	56.6	55.0	55.4

Notes: (1) data capture for the monitoring period, in cases where monitoring was only carried out for part of the year.

(2) data capture for the full calendar year (e.g. if monitoring was carried out for 6 months, the maximum data capture for the full calendar year is 50%).

(3) All means have been “annualised” as per Technical Guidance LAQM.TG16, valid data capture for the full calendar year is less than 75%. See Appendix C for details.

Figure A.5 – Trends in Annual Mean O₃ Concentrations

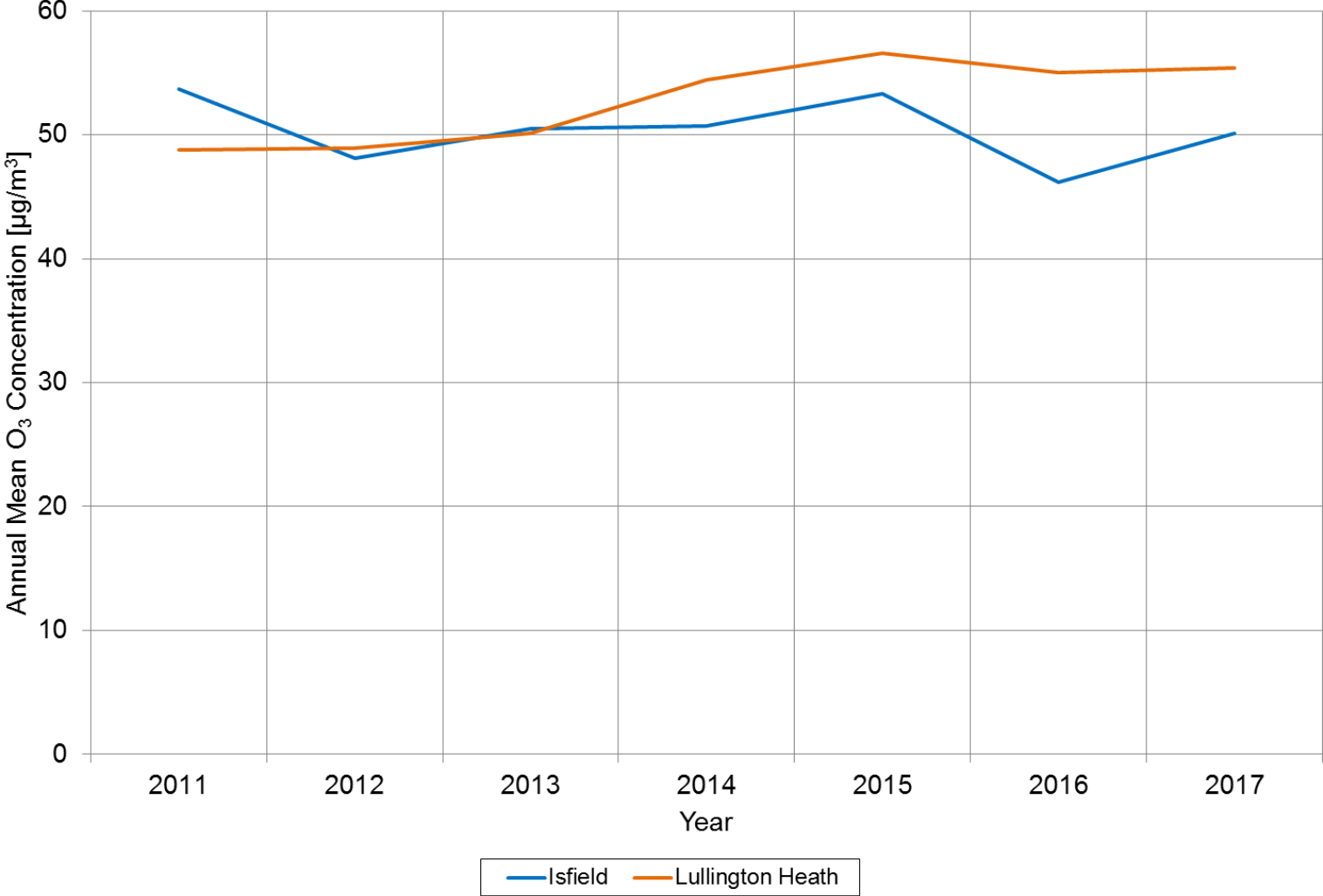


Table A.10 – Running 8-Hour Mean O₃ Monitoring Results

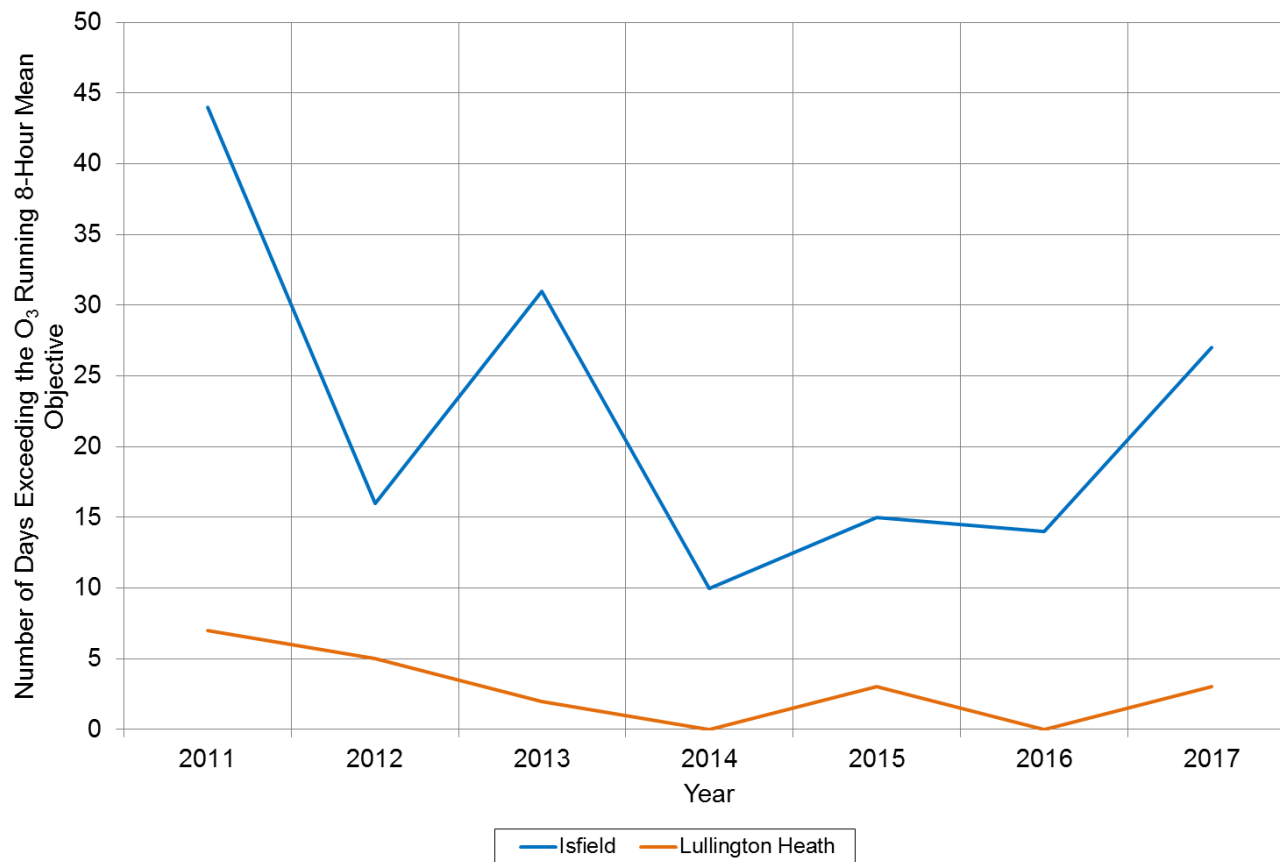
Site ID	Site Type	Valid Data Capture for Monitoring Period (%) ⁽¹⁾	Valid Data Capture 2017 (%) ⁽²⁾	Days With O ₃ Running 8-Hour Means > 120µg/m ³				
				2013	2014	2015	2016	2017
AR2	Rural	99	99	31	10	15	14	27
LL1	Rural	94	94	2	0	3	0	3

Notes: Exceedances of the O₃ running 8-hour mean objective (100 µg/m³ not to be exceeded more than 10 days/year) are shown in **bold**.

(1) data capture for the monitoring period, in cases where monitoring was only carried out for part of the year.

(2) data capture for the full calendar year (e.g. if monitoring was carried out for 6 months, the maximum data capture for the full calendar year is 50%).

Figure A.6 – Trends in Number of Days Exceeding the Running 8-Hour Mean O₃ Objective (100µg/m³)



Appendix B: Full Monthly Diffusion Tube Results for 2017

Table B.1 – NO₂ Monthly Diffusion Tube Results - 2017

Site ID	NO ₂ Mean Concentrations (µg/m ³)														
	Jan	Feb	Mar	Apr	May	Jun	Jul	Aug	Sep	Oct	Nov	Dec	Annual Mean		
													Raw Data	Bias Adjusted (0.87) and Annualised ⁽¹⁾	Distance Corrected to Nearest Exposure ⁽²⁾
W1	30.8		15.5	13.9	11.9	9.3	8.8	10.3	15.6	12.5	19.9	17.3	15.1	13.1	11.0
W2	43.5		25.8	28.4		20.8	21.8	20.8	25.6		32.7	24.6	27.1	23.6	17.6
W3	33.1		17.1	14.7	14.1	12	12	11.8		16.6	25.2	22.2	17.9	15.6	11.8
W4	59.4		40.7	44.2	35.9	39.3	35.4	38.9	41.6	40	44.8	48.7	42.7	37.1	26.8
W5	44.3		34.6		35.4	29.9	32.5	33.2	30	39.6	28.1	36.8	34.5	30.0	18.6
W6	45.2		26.1	27.6	27.7	23.2	20	21.2	40.8	26.6	43.6	27.6	30.0	26.1	24.7
W7	56.3		26.4			19.4	19	17.6	24.9	18.4		25.1	25.9	23.0	13.4
W8	67.2		38.1	41.1	40.6	34.9	35.9	34.7	40.4	19.4	45.9	44.1	40.2	35.0	24.6
W9					9.8	7.6	6.9	7.3	12.7	13.1	13.6	12.6	10.4	10.7	10.7
W10					35.2	40.9	39.6	35.9	40.8		45.5	46.2	40.6	40.6	37.4

- Local bias adjustment factor used
- National bias adjustment factor used
- Annualisation has been conducted where data capture is <75%
- Where applicable, data has been distance corrected for relevant exposure

Notes:

Exceedances of the NO₂ annual mean objective of 40µg/m³ are shown in **bold**.

NO₂ annual means exceeding 60µg/m³, indicating a potential exceedance of the NO₂ 1-hour mean objective are shown in **bold and underlined**.

(1) See Appendix C for details on bias adjustment and annualisation.

(2) Distance corrected to nearest relevant public exposure.

Appendix C: Supporting Technical Information / Air Quality Monitoring Data QA/QC

Significant changes to sources

No significant changes to sources to report.

Detailed modelling or monitoring for changes to AQMAs

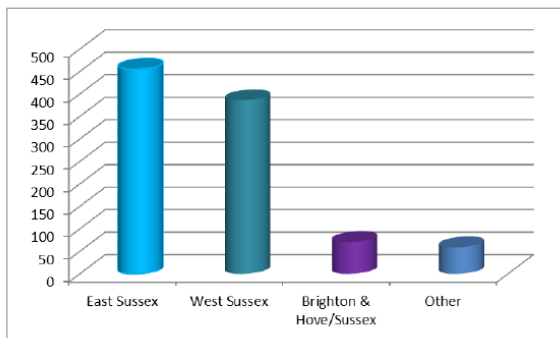
No detailed modelling or monitoring campaign has been conducted to determine whether an AQMA needs to be declared, amended or revoked.

Additional evidence in support of measures for Action Plans

Measure n.4: airAlert. As of March 2018, the total number of subscribers to the airAlert service by the Sussex Air Quality Partnership has increased to 971, and the number of subscribers in Wealden District is 70.

Figure B.1 – airAlert Statistics March 2018

airAlert stats March 2018



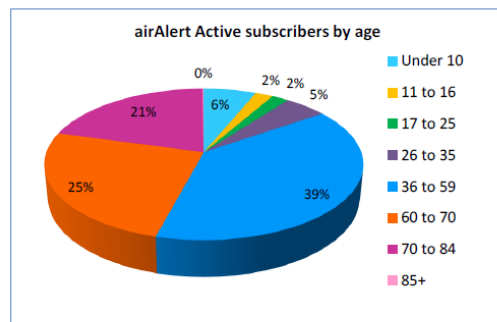
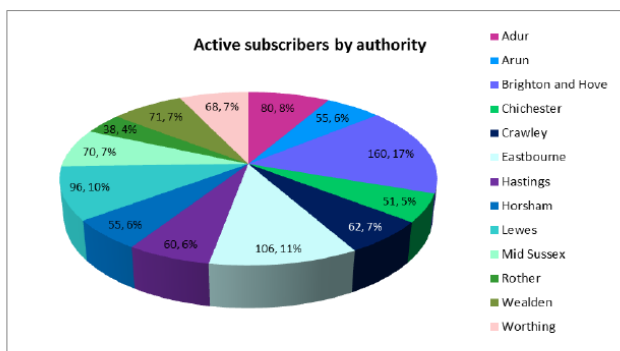
971 airAlert subscribers in Sussex
 455 – East Sussex
 386 – West Sussex
 71 – Brighton & Hove
 59 – Other



Three airAlerts sent between 07.12.17 and 08.03.18
 All at MODERATE level

Delivery methods
 Text message – 524
 Voice message – 114
 Email – 314
 School email - 17
 iPhone App – 2
 Android App – 0

46% of airAlert subscribers are aged 60+
 39% are aged 36 to 59
 5% are aged 26 to 35
 10% are under 25



Diffusion Tube Bias Adjustment Factors

Bias adjustment is effectively a calculated factor which shows whether diffusion tubes are over or under-reading ambient concentrations, thereby allowing a correction to be made.

Wealden District Council does not carry out a co-location study with diffusion tubes and an automatic continuous analyser, and so it is necessary to use the national database of bias adjustment factors (version 09/18) to select the appropriate bias adjustment factor for diffusion tubes prepared by Gradko. Figure C.1 shows the appropriate national bias adjustment factor used in this report.

Figure C.1: National Diffusion Tube Bias Adjustment Factor for Wealden District Council (Gradko).

National Diffusion Tube Bias Adjustment Factor Spreadsheet							Spreadsheet Version Number: 09/18				
Follow the steps below in the correct order to show the results of relevant co-location studies										This spreadsheet will be updated at the end of March 2019	
Data only apply to tubes exposed monthly and are not suitable for correcting individual short-term monitoring periods										LAQM Helpdesk Website	
Whenever presenting adjusted data, you should state the adjustment factor used and the version of the spreadsheet										Spreadsheet maintained by the National Physical Laboratory. Original compiled by Air Quality Consultants Ltd.	
This spreadsheet will be updated every few months; the factors may therefore be subject to change. This should not discourage their immediate use											
The LAQM Helpdesk is operated on behalf of Defra and the Devolved Administrations by Bureau Veritas, in conjunction with contract partners AECOM and the National Physical Laboratory											
Step 1:		Step 2:		Step 3:		Step 4:					
Select the Laboratory that Analyses Your Tubes from the Drop-Down List		Select a Preparation Method from the Drop-Down List		Select a Year from the Drop-Down List		Where there is only one study for a chosen combination, you should use the adjustment factor shown with caution. Where there is more than one study, use the overall factor ⁵ shown in blue at the foot of the final column.					
If a laboratory is not shown, we have no data for this laboratory.		If a preparation method is not shown, we have no data for this method at this laboratory.		If a year is not shown, we have no data.		If you have your own co-location study then see footnote ⁴ . If uncertain what to do then contact the Local Air Quality Management Helpdesk at LAQMHelpdesk@uk.bureauveritas.com or 0800 0327953					
Analysed By ¹	Method ² <small>Tube type, preparation, choice (All from the pop-up list)</small>	Year ³ <small>Preparation year, selection, choice (All)</small>	Site Type	Local Authority	Length of Study (months)	Diffusion Tube Mean Conc. (Dm) (µg/m ³)	Automatic Monitor Mean Conc. (Cm) (µg/m ³)	Bias (B)	Tube Precision ⁶	Bias Adjustment Factor (A) (Cm/Dm)	
Gradko	20% TEA in water	2017	UB	Bracknell Forest Borough Council	11	19	16	23.0%	G	0.81	
Gradko	20% TEA in water	2017	R	Bracknell Forest Borough Council	12	47	39	21.7%	G	0.82	
Gradko	20% TEA in water	2017	R	Biggleswick & Hove City Council	11	51	50	1.6%	G	0.98	
Gradko	20% TEA in water	2017	R	Wokingham Borough Council	11	39	37	4.6%	G	0.96	
Gradko	20% TEA in water	2017	UC	Southampton City Council	11	31	29	5.3%	G	0.95	
Gradko	20% TEA in water	2017	R	Pleiston City Council	12	31	26	23.3%	G	0.81	
Gradko	20% TEA in water	2017	R	Monmouthshire County Council	9	42	33	26.6%	G	0.79	
Gradko	20% TEA in water	2017	R	Cheshire West and Chester	11	36	36	1.4%	G	0.99	
Gradko	20% TEA in water	2017	LI	Crawley Borough Council	12	28	28	-1.2%	G	1.01	
Gradko	20% TEA in water	2017	R	Borough Council of Kings Lynn & West Norfolk	12	29	25	16.0%	G	0.86	
Gradko	20% TEA in water	2017	R	Bath & North East Somerset	12	45	45	-0.2%	G	1.00	
Gradko	20% TEA in water	2017	R	NOTTINGHAM CITY COUNCIL	12	38	41	-6.6%	G	1.07	
Gradko	20% TEA in water	2017	R	Lancaster City Council	12	35	32	9.7%	G	0.91	
Gradko	20% TEA in water	2017	R	Thurrock Borough Council	12	54	52	3.3%	S	0.97	
Gradko	20% TEA in water	2017	R	Thurrock Borough Council	11	35	33	7.0%	G	0.93	
Gradko	20% TEA in water	2017	R	Thurrock Borough Council	9	33	29	14.3%	G	0.87	
Gradko	20% TEA in water	2017	UB	Thurrock Borough Council	11	30	28	8.0%	S	0.93	
Gradko	20% TEA in water	2017	R	Dudley MBC	12	50	50	0.0%	G	0.99	
Gradko	20% TEA in water	2017	UB	Dudley MBC	12	24	19	26.6%	G	0.79	
Gradko	20% TEA in water	2017	R	City of Lincoln Council	12	42	31	33.2%	G	0.75	
Gradko	20% TEA in water	2017	R	Gedling Borough Council	12	35	31	10.1%	G	0.91	
Gradko	20% TEA in water	2017	R	Gatehead Council	12	36	37	-2.7%	G	1.03	
Gradko	20% TEA in water	2017	R	Gatehead Council	12	29	25	17.5%	G	0.85	
Gradko	20% TEA in water	2017	R	Gatehead Council	12	34	35	-6.3%	G	1.06	
Gradko	20% TEA in water	2017	R	LB Hounslow	12	65	54	22.2%	G	0.82	
Gradko	20% TEA in water	2017	R	LB Hounslow	12	59	53	10.6%	G	0.90	
Gradko	20% TEA in water	2017	B	LB Hounslow	11	28	30	-6.0%	G	1.06	
Gradko	20% TEA in water	2017	R	LB Hounslow	11	43	34	28.8%	G	0.78	
Gradko	20% TEA in water	2017	B	LB Hounslow	9	38	33	14.9%	G	0.87	
Gradko	20% TEA in water	2017	R	LB Hounslow	11	62	42	24.4%	G	0.80	
Gradko	20% TEA in water	2017	UB	Liverpool	11	20	17	15.2%	G	0.87	
Gradko	20% TEA in water	2017	R	North Ayrshire Council	12	26	21	23.2%	G	0.81	
Gradko	20% TEA in water	2017	R	South Gloucestershire Council	12	25	23	10.3%	G	0.91	
Gradko	20% TEA in water	2017	KS	Marlebone Road Intercomparison	12	101	79	28.6%	G	0.78	
Gradko	20% TEA in water	2017	R	Aids and North Down Borough Council	11	40	25	59.2%	G	0.63	
Gradko	20% TEA in water	2017	UC	Belfast City Council	12	32	25	27.5%	G	0.78	
Gradko	20% TEA in water	2017	R	Lisburn & Castlereagh City Council	12	41	27	51.9%	G	0.56	
Gradko	20% TEA in water	2017	R	The Highland Council	11	24	21	15.1%	G	0.87	
Gradko	20% TEA in water	2017	R	The Highland Council	10	36	39	-7.9%	G	1.05	
Gradko	20% TEA in water	2017		Overall Factor⁵ (39 studies)					Use	0.87	

Discussion of Choice of Factor to Use

Wealden District Council has no means of deriving a local bias adjustment factor as there is no co-location study with diffusion tubes and a continuous analyser.

Therefore, the national bias adjustment factor has been used.

PM Monitoring Adjustment

The PM₁₀ data from the FDMS continuous analysers at Eastbourne Devonshire Park (EB1) and Holly Place (EB3) measure gravimetric-equivalent PM₁₀ concentrations, and therefore no additional adjustment has been necessary. For consistency, the data presented in this report is the same as included in the Eastbourne 2017 ASR.

Short-term to Long-term Data Adjustment

Data capture in 2017 was higher than 75% for all monitoring sites in Wealden District except for existing diffusion tube location W7, and new locations W9 and W10 as these were commissioned in May 2017. Details of short-term to long-term data adjustment for the automatic monitor at Eastbourne Devonshire Park in Eastbourne Borough are given in the Eastbourne 2017 ASR.

Data capture for the W7 Outside Rydale A267 diffusion tube site in 2017 was 67%, and so annualisation was carried out using data from three continuous NO₂ analysers in background sites within 50 miles: Eastbourne – Holly Place (EB3), Lullington Heath (LH), and Brighton Preston Park (BRT3), which had 99%, 98% and 98% data capture, respectively. The periods used in the annualisation calculation were January, March, June – October, December. The average ratio of the annual mean to the period mean is the adjustment factor used. The details of this adjustment calculation are given in Table C.1.

Table C.1 – Period Adjustment of 2017 NO₂ Data for W7 (Outside Rydale A267) diffusion tube monitoring site

Site ID	Annual Mean Concentration (µg/m ³)	Period Mean Concentration (µg/m ³)	Annual Mean to Period Mean Ratio
EB3	12.2	11.9	1.03
LH	7.7	7.5	1.02
BRT3	16.9	16.6	1.02
Average Ratio			1.02

Data capture for the W9 Forest Row Riverside diffusion tube site in 2017 was 67%, and so annualisation was carried out using data from three continuous NO₂ analysers in background sites within 50 miles: Eastbourne – Holly Place (EB3), Lullington Heath (LH), and Brighton Preston Park (BRT3), which had 99%, 98% and 98% data capture, respectively. The period used in the annualisation calculation was May – December. The average ratio of the annual mean to the period mean is the adjustment factor used. The details of this adjustment calculation are given in Table C.2.

Table C.2 – Period Adjustment of 2017 NO₂ Data for W9 (Forest Row Riverside) diffusion tube monitoring site

Site ID	Annual Mean Concentration (µg/m ³)	Period Mean Concentration (µg/m ³)	Annual Mean to Period Mean Ratio
EB3	12.2	10.1	1.22
LH	7.7	6.4	1.20
BRT3	16.9	15.0	1.12
Average Ratio			1.18

Data capture for the W10 Forest Row A22 diffusion tube site in 2017 was 58%, and so annualisation was carried out using data from three continuous NO₂ analysers in background sites within 50 miles: Eastbourne – Holly Place (EB3), Lullington Heath (LH), and Brighton Preston Park (BRT3), which had 99%, 98% and 98% data capture, respectively. The periods used in the annualisation calculation were May – September and November – December. The average ratio of the annual mean to the period mean is the adjustment factor used. The details of this adjustment calculation are given in Table C.3.

Table C.3 – Period Adjustment of 2017 NO₂ Data for W10 (Forest Row A22) diffusion tube monitoring site

Site ID	Annual Mean Concentration ($\mu\text{g}/\text{m}^3$)	Period Mean Concentration ($\mu\text{g}/\text{m}^3$)	Annual Mean to Period Mean Ratio
EB3	12.2	10.3	1.19
LH	7.7	6.6	1.16
BRT3	16.9	15.1	1.12
Average Ratio			1.15

QA/QC of Automatic Monitoring

As previously described in Section 2.1, monitoring stations within East Sussex are part of the SAQMN and, therefore, measurements made at these sites are traceable to national standards and operational procedures defined for the regional network. AURN sites such as Lullington Heath and Holly Place are managed by Defra contractors and data collected at these sites are traceable to the UK AURN national standards.

QA/QC of Diffusion Tube Monitoring

AIR is an independent analytical proficiency-testing (PT) scheme, operated by LGC Standards and supported by the Health and Safety Laboratory (HSL). AIR PT is a new scheme, started in April 2014, which combines two long running PT schemes: LGC Standards STACKS PT scheme and HSL Workplace Analysis Scheme for Proficiency (WASP) PT scheme.

Defra and the Devolved Administrations advise that diffusion tubes used for Local Air Quality Management should be obtained from laboratories that have demonstrated satisfactory performance in the AIR PT scheme.

Wealden District Council used Gradko International for the supply and analysis of diffusion tubes, with a 20% triethanolamine (TEA) in water preparation. In all of the 8 most recent AIR PT testing rounds running from September 2016 until August 2018, Gradko achieved 100% satisfactory results, so there is high confidence in the accuracy of the diffusion tube results.

Distance Correction Using the NO₂ Fall-off with Distance Calculator

Annual average NO₂ data from non-automatic monitoring sites W1, W2, W3, W4, W5, W6, W7, W8 and W10 in 2017 have been corrected for distance using the NO₂

Fall-Off with Distance Calculator (Version 4.2) and total NO₂ concentrations from the DEFRA Background Maps for 2017. Detailed results for the calculations are included in Table C.1.

A distance factor has been calculated as the ratio between the distance-corrected and the bias-adjusted annual average NO₂ concentration at each site in 2017. These factors have been applied to all monitored annual average NO₂ concentrations in 2017 in Table B.1.

Table C.4 – Distance Correction Calculations - 2017

Site ID	Distance (m)			Annual Mean NO ₂ Concentrations (µg/m ³)			Distance Factor
	Tube - Kerb	Tube - Receptor	Receptor-Kerb	DEFRA Mapped Background	Bias Adjusted (0.87) and Annualised	Distance Corrected to Nearest Exposure	
W1	2.0	7.5	9.5	7.3	13.1	11.0	0.84
W2	2.0	7.5	9.5	7.3	23.6	17.6	0.75
W3	1.0	15.0	16.0	8.8	15.6	11.8	0.76
W4	2.0	7.5	9.5	8.8	37.1	26.8	0.72
W5	1.0	13.0	14.0	8.7	30.0	18.6	0.62
W6	1.0	0.5	1.5	8.7	26.1	24.7	0.95
W7	1.0	7.5	8.5	8.7	23.0	16.8	0.73
W8	2.0	8.0	10.0	7.5	35.0	24.6	0.70
W9	N/A	5.0	N/A	7.4	10.7	10.7	1.00
W10	2.0	1.0	3.0	7.4	40.6	37.4	0.92

Appendix D: Map(s) of Monitoring Locations and AQMAs



Contains Ordnance Survey data © Crown copyright and database right 2018
 Sunley House, 4 Bedford Park, Croydon, CR0 2AP
 Tel: +44 (0)20 8639 3500, Fax: +44 (0)20 8663 6723
 www.aecom.com



2017 Wealden Monitoring Locations

Legend

- 2017 Wealden Diffusion Tubes
- ★ 2017 Continuous Monitors
- Local Authority Boundary

Appendix E: Summary of Air Quality Objectives in England

Table E.1 – Air Quality Objectives in England

Pollutant	Air Quality Objective ¹⁸	
	Concentration	Measured as
Nitrogen Dioxide (NO ₂)	200 µg/m ³ not to be exceeded more than 18 times a year	1-hour mean
	40 µg/m ³	Annual mean
Particulate Matter (PM ₁₀)	50 µg/m ³ , not to be exceeded more than 35 times a year	24-hour mean
	40 µg/m ³	Annual mean
Sulphur Dioxide (SO ₂)	350 µg/m ³ , not to be exceeded more than 24 times a year	1-hour mean
	125 µg/m ³ , not to be exceeded more than 3 times a year	24-hour mean
	266 µg/m ³ , not to be exceeded more than 35 times a year	15-minute mean

Table E.2 – Additional objectives from the UK Air Quality Strategy

Pollutant	Air Quality Objective ¹⁵	
	Concentration	Measured as
Ozone (O ₃)	100 µg/m ³ , not to be exceeded more than 10 days a year	Running 8-hour mean
Particulate Matter (PM _{2.5})	25 µg/m ³	Annual Mean

¹⁸ The units are in microgrammes of pollutant per cubic metre of air (µg/m³).

Glossary of Terms

Abbreviation	Description
AQAP	Air Quality Action Plan - A detailed description of measures, outcomes, achievement dates and implementation methods, showing how the local authority intends to achieve air quality limit values'
AQMA	Air Quality Management Area – An area where air pollutant concentrations exceed / are likely to exceed the relevant air quality objectives. AQMAs are declared for specific pollutants and objectives
ASR	Air quality Annual Status Report
Defra	Department for Environment, Food and Rural Affairs
DMRB	Design Manual for Roads and Bridges – Air quality screening tool produced by Highways England
ESCC	East Sussex County Council
EU	European Union
FDMS	Filter Dynamics Measurement System
LAQM	Local Air Quality Management
NO ₂	Nitrogen Dioxide
NO _x	Nitrogen Oxides
PM ₁₀	Airborne particulate matter with an aerodynamic diameter of 10µm (micrometres or microns) or less
PM _{2.5}	Airborne particulate matter with an aerodynamic diameter of 2.5µm or less
QA/QC	Quality Assurance and Quality Control
SAQMN	Sussex Air Quality Monitoring Network
SO ₂	Sulphur Dioxide

References

1. Wealden District Council, 2017 Air Quality Annual Status Report for Wealden District Council, 2017.
2. Sussex Air Quality Partnership – Sussex-air website. Available at <http://www.sussex-air.net/Default.aspx>
3. Sussex Air Quality Partnership Air Quality Strategic Plan 2010
http://www.sussex-air.net/Reports/SAQP_Vision_Strategy_2015.pdf
4. Wealden District (Incorporating Part of the South Downs National Park), Core Strategy Local Plan, 2013. Available at:
<http://www.wealden.gov.uk/nmsruntime/saveasdialog.aspx?IID=14756&SID=2829>
5. Rother District Council, Hastings Borough Council. Wealden District Council and Eastbourne Borough Council, Appropriate Assessment and Air Quality Local to the Pevensey Levels Ramsar Site, 2009. Available at:
<http://www.wealden.gov.uk/nmsruntime/saveasdialog.aspx?IID=14305&SID=5509>
6. Wealden District Council, Guidelines for the creation of Suitable Alternative Natural Green Space (SANGS), 2013. Available at:
<http://www.wealden.gov.uk/nmsruntime/saveasdialog.aspx?IID=13843&SID=3484>
7. Wealden District Council, Guidance note on reducing nitrogen deposition at the Ashdown Forest Special Area of Conservation and Special Protection Area, 2013. Available at:
<http://www.wealden.gov.uk/nmsruntime/saveasdialog.aspx?IID=12452&SID=3484>
8. Wealden District Council, Ashdown Forest SAC. Method for Air Quality Monitoring and Assessment of Nitrogen Deposition, 2013 .Available at:
<http://www.wealden.gov.uk/nmsruntime/saveasdialog.aspx?IID=13088&SID=3484>
9. Wealden District Council website, Ashdown Forest Special Protection Area, Special Area of Protection and Site of Special Scientific Interest.

http://www.wealden.gov.uk/Wealden/Residents/Planning_and_Building_Control/Planning_Development_Management/Agents_and_Parish_Council_Information/Planning_Agents_Ashdown_Forest.aspx Retrieved July 2016.

10. Wealden District Council website, Ashdown Forest Monitoring FAQs:
http://www.wealden.gov.uk/Wealden/Residents/Planning_and_Building_Control/Planning_Policy/Evidence_Base/PPolicy_Ashdown_Forest_Monitoring_FAQs.aspx Retrieved July 2016.
11. Air Quality Consultants (2016). Interim Report Year 1: Ashdown Forest Air Quality Monitoring and Modelling.
http://www.wealden.gov.uk/Wealden/Residents/Planning_and_Building_Control/Planning_Policy/CoreStrategy/CoreStrategyLibrary/Planning_Evidence_Base_Habitat_Regulations_Assessment.aspx
12. EC Habitats Directive 1992, interpreted into British law by the Conservation (Natural Habitats &c) Regulations 1994 (as amended in 2007).
13. Defra, 2018. National Diffusion Tube Bias Adjustment Factor Spreadsheet, Spreadsheet Version Number: 06/18. Available at:
<http://laqm.defra.gov.uk/bias-adjustment-factors/national-bias.html>
14. Defra, Part IV of the Environment Act 1995 Environment (Northern Ireland) Order 2002 Part III, Local Air Quality Management Technical Guidance LAQM.TG(09), 2009. Available at
<http://www.defra.gov.uk/publications/files/pb13081-tech-guidance-laqm-tg-09-090218.pdf>
15. Air Quality Consultants (2018). Ashdown Forest Air Quality Monitoring and Modelling Volume 1, available at:
http://www.wealden.gov.uk/Wealden/Residents/Planning_and_Building_Control/Planning_Policy/Evidence_Base/Planning_Evidence_Base_Habitat_Regulations_Assessment.aspx
16. East Sussex Local Transport Plan. Available at:
<https://www.eastsussex.gov.uk/roadsandtransport/localtransportplan/lt3/downloadlt3>
17. Wealden Habitats Directive AQ Reports for Ashdown Forest, available at:
http://www.wealden.gov.uk/Wealden/Residents/Planning_and_Building_Control

[ol/Planning_Policy/CoreStrategy/CoreStrategyLibrary/Planning_Evidence_Base_Habitat_Regulations_Assessment.aspx](https://www.wealden.gov.uk/Planning_Policy/CoreStrategy/CoreStrategyLibrary/Planning_Evidence_Base_Habitat_Regulations_Assessment.aspx)

18. Eastbourne Borough Council, 2017 Air Quality Annual Status Report.
19. Defra, 2018. Summary of Laboratory Performance in AIR NO₂ Proficiency Testing Scheme (AIR-PT rounds 16 to 27, September 2016- August 2018). Available at <https://laqm.defra.gov.uk/diffusion-tubes/qa-qc-framework.html>
20. Defra, 2017a. NO₂ Fall-Off with Distance Calculator (Version 4.2). Available at <https://laqm.defra.gov.uk/documents/NO2-Fall-Off-With-Distance-from-Roads-Calculator-v4.2.xls>
21. Defra, 2017b. Background Mapping data for local authorities – 2015. Available at <https://uk-air.defra.gov.uk/data/laqm-background-maps?year=2015>